

Message from Rabbi Greyber:



On High Holidays in a Theater

A ritual is an enactment of meaning. That is what makes a house of worship not a theater, and a congregation something other than an audience. A congregation participates in a ritual; an audience merely watches and listens. A congregation lives the reality encoded by the ritual; an audience merely suspends its disbelief while the play is going on, know that what it is seeing is a fiction. A ritual is an act in the world; a drama is not, it is a mere imitation of one.

Rabbi Jonathan Sacks, *The Great Partnership: Science, Religion and the Search for Meaning*, p.198.

Inside this issue:

A note from the President...	2-3
Staff and Committee Updates...	4-16
Capital Campaign Update...	17-19
New Member Spotlights...	20
Stories and Simchas....	21-22
Holidays at Beth El...	23-27
Yahrzeit Reminders...	28-29
Thank You to our Donors...	30-34
Schedule of Services...	35

I am excited for Rosh Hashanah and Yom Kippur services at the Carolina Theatre! First, it will just be so cool! I'm not sure how else to put it, but thinking about having our services in a building that's been part of our community for so long and in a space where so many stars have performed over the years just makes me smile – I hope it does you too!

Second, there will be plenty of room! For the past several years, we've run out of seats at peak service times and, as inviting as we hope to be as a congregation, nothing says, "you're not really welcome here" more than not having a seat to offer. This year we should have plenty of room to fulfill our mission of opening our doors wide and making sure everyone has a place, especially on Judaism's holiest days. (By the way, as always, please let the office know if you have room for someone new at your festival meals! And if you'd like an invitation, call the office so we can help!)

Finally, as former BE President Noah Pickus put it last Yom Kippur, dislocation invites innovation. With special thanks to our Va'ad Chinuch and our Education & Youth Director Elisabeth Gerson, this year we will hold High Holiday Family Services in addition to our annual Tot Service for families with kids ages 4 and under, since the theater lacks the space to hold separate services for different age children. Valerie Glassman and Helene Singer have been leading the design of the services, and will also lead the services, where adults and children will experience the High Holidays together, as a family, and reflect upon themes like forgiveness and repentance. Doing so invites Jewish tradition to impact our lives' most important – and often difficult – relationships. I will look forward to visiting the Family Service and sharing a story each day.

But...High Holidays at the Carolina Theatre also carries risk. I am not an architect, but one feels how spaces are laden with scripts, expectations. Bars invite us to unwind and mingle. Libraries ask for quiet and focus. And, as Rabbi Sacks wrote above, theaters invite us to sit back, relax, and enjoy the show. But that's not what High Holidays are about!

One of the reasons I fell in love with Beth El when I first visited on a Shabbat morning in November of 2009 was a clear sense that the community understands services are not a show; they are, as Sacks writes, an *enactment of meaning*, something we don't watch but rather *participate in* to remind us of our deepest held values as individuals and as a community.

We are working hard to make the theater stage into a bimah, to prevent it from feeling too far away or inaccessible, but some of that is up to us, so I write with an invitation based on an ancient prayer. In his essay, “*Mah Tovv as a Psychological Introduction to Prayer*,” Reuven Kimelman writes how “Mah Tovv serves as a threshold prayer seeking to help the would-be worshiper overcome his/her reluctance and uneasiness of entering the Lord’s house.”
A threshold prayer.

Come sit for a moment in Elijah's chair on the *bimah*. At any point during the services – okay, maybe not during the sermon, as that could be a bit distracting, but at other times as services are going on – Elijah's chair is reserved for each of us who needs it to take a private moment of reflection in our public space. Your presence in Elijah's chair may also remind others that, despite our presence in a theater, our job is not to watch but to witness.

I look forward to seeing you on the New Year. Until then, may God's presence bless us wherever we go.

In Your abundant love, O God, answer me with the truth of your salvation.

Daniel G

I hope everyone is having a wonderful summer. Our children, Avery and Hannah, began their summers at Camp Ramah Darom in Georgia, where they had a blast, and came back teaching us new songs and dances, and even a little Torah. One of the highlights was the connections they built with other Beth El kids, including teens that served as their CIT's during the week. I was able to see all of the Beth El campers briefly when we picked up Hannah from Taste of Ramah, and it was a real treat to see them all joke together and show off what a great time they



Alan comes to us with deep experience in managing Jewish camps across the country and has immediately applied his enthusiasm for Jewish culture, strong management, and operations to needs at Beth El. He has jumped in quickly on many projects, including our ongoing construction, implementing online membership renewal, and organizing for the coming year. If you missed meeting him at Shul at the Pool, Shabbat services, or around the Freedman Center during the week, I hope you'll get a chance to say hello and give him a warm welcome soon.

2

(continued from page 2)

As we head into the end of summer, we are starting to get ready for Beth El to host High Holidays away from our usual space, in the Carolina Theatre in Durham. I want to thank the many people who are already volunteering their time to think through the many details that make Beth El High Holidays so meaningful, and how we will carry forward our traditions in a different space. One of my favorite things about serving on the Beth El Board has been to learn about the individuals at Beth El who step up each year to take on hidden tasks like polishing the silver or organizing the ushers to ensure a beautiful High Holidays for all of us. With the new space, we will have more needs than ever to get things ready and we hope many of you will consider volunteering your time to help us ensure the holidays go well for everyone. A change in space is also of course an opportunity to try something different, so I also want to ask for everyone's patience and understanding these holidays and to consider the ways in which they can help ensure this year's unique experience will be a positive memory for all of us.

Finally, at the end of August, our new Board will be gathering for a retreat to kick off our year. One of our priorities is exploring ways we can engage more members of Beth El in building longstanding, sustainable relationships with each other. If you have ideas about what would energize you to be more engaged at Beth El, please share your ideas with a member of the Board and offer to help jump in to help make these ideas happen.

I am looking forward to a terrific year together.

Debbie



Staff

Rabbi: Rabbi Daniel Greyber

Rabbi Emeritus: Rabbi Steve Sager

Executive Director: Alan Friedman

Education & Youth Director: Elisabeth Gerson

Director of Teen Engagement: Averyl Edwards

Congregational Services Coordinator:

Sheri Hoffman

Communications & Marketing Associate:

Rachel Greene

Kitchen Manager: Sandy Fangmeier

B'nai Mitzvah Coordinator: Jessie Zaleon-Lunk

Board of Directors

President: Debbie Goldstein

1st VP: Leslie Winner

2nd VP: Dan Schnitzer

Treasurer: Syd Miller

Recording Secretary: Richard Hart

Financial Secretary: Valerie Glassman

Immediate Past President: Noah Pickus

Meg Anderson, Morty Berkowitz, Karen Burns,
Donna Goldstein, Hope Hartman,
David Klapper, Kim Bardy Langsam, Lois Price,
Scott Schwartz, Herman Sperling,
Tal Lewin Wittle

2017-2018 and 2018-2019

Beth El Board of Trustees

Left to right: Meg Anderson, Karen Burns, Valerie Glassman, Herman Sperling, Syd Miller, Tal Lewin Wittle, Rhoda Silver, Dan Schnitzer, Leslie Winner, Kim Bardy Langsam, Lois Price, Debbie Goldstein, David Klapper, Laura Flicker, Hope Hartman, and Richard Hart in front center



A Note from Executive Director Alan Friedman

“I have been a stranger in a strange land.” (Exodus 2:22)

In the past 15 years, life has taken me from New Jersey to San Diego to Boston to Los Angeles, and now to Durham. Each of them has their own unique differences – cultural, social, food, linguistic, and political. Often times, there are things that take getting used to (my partner Ian is on a constant hunt to find the best Mexican food outside of San Diego!); there are differences and assumptions that continually surprise me. But each location has been deeply aligned in their Jewish values and way of life.

And so, from my first interactions with Beth El, I’ve found the community to be one of sincere welcome, openness, and genuine care. Being a newcomer is difficult, but while the newness of joining our community was like being a stranger in a strange land, I never felt like a stranger. Rather, I felt accepted into a family that cared for one another and went out of its way to make “the stranger” feel welcome.

From my initial interview back in January, to spending three days in Durham for my final interviews and then meeting Rabbi Greyber in the San Francisco airport for coffee, I knew Beth El was an incredible community and the right place for me to call home.

It’s hard to believe that it’s been almost three months since I arrived in Durham. I’ve had the opportunity to meet many congregants, attend various committee meetings, and get started on a myriad of projects, including High Holidays at the Carolina Theatre and our building renovation just to name two. The time has really flown by, and I feel like I’m just getting started! The work we are doing together is both meaningful and exciting.

As we prepare for the New Year, please remember that we were all once strangers navigating our way through new lands, whether physically, emotionally or spiritually. For all of these, I ask that you continue to be open to growing our community, cultivate strong and meaningful relationships, and always welcome the stranger with open arms.



Beth El Staff, June 2018



Getting to Know Beth El's Youth Faculty

One of the things that makes Beth El such a special place is our flourishing youth program. Not only do we have amazing youth group activities, but our Talmud Torah has been around for decades! Our curriculum is strong, but what really makes it unique is our staff. Our Youth Faculty is comprised of a variety of teachers from all over! We have Madrichim (teen assistants) who recently celebrated their own B'nei Mitzvah, Duke and UNC undergrads, young professionals, and people who have been on staff for 10+ years!

When I started working at Beth El, I encountered something here that not many synagogue schools can boast about (and that's just what I am about to do)...multiple members of our staff are people who grew up at Beth El and have come back as young professionals to give back to their home community. Even if they went away for a bit, they have come back or stayed connected and continue to call Beth El their home. Two of those amazing members of our faculty are Jacob Schonberg and Jessie (Zaleon) Lunk.



Jacob Schonberg

—Talmud Torah Ivrit Specialist

What do you do when you aren't working in the Talmud Torah?

I work in community mental health and volunteer with the NC Harm Reduction Coalition. I love reading, especially sci-fi and fantasy and I spend a lot of time at the coffee shop. I love going to concerts and traveling.

When were you in Talmud Torah at Beth El/ When was your Bar Mitzvah?

My Bar Mitzvah was in October of 1995, I attended Talmud Torah throughout my whole childhood. I also went to Midrascha for several years.

Who was the principal of the Talmud Torah when you were a student?

Michele Pas

Did you have a favorite teacher?

Not really, I was pretty "angsty" in Talmud Torah as a kid.

(continued on page 5)



Jessie (Zaleon) Lunk

—B'nei Mitzvah Tutoring Coordinator

What do you do when you aren't working at Beth El?

I work as a Product Manager at LabCorp. Otherwise I'm playing with my kids (9 months and 3 years old).

When was your Bar/t Mitzvah?

My Bat Mitzvah was Oct. 28, 2000 (Bereishit)

Who was the principal of the school then?

Michele Pas

Did you have a favorite teacher?

I had a few really good teachers who left a lasting impression. My absolute favorite was Rachel Nussbaum, who taught me in 3rd grade.

What is a fun or silly memory you have from your time as a student in TT or from your B'nei Mitzvah preparations?

There were 28 students in my B'nei Mitzvah class. It felt like we had a party every week!

(continued from page 4)

(Jacob, cont.)

What is a fun or silly memory you have from your time as a student in TT or from your B'nei Mitzvah preparations?

I got super into it when my 4th grade (I think) teacher had a system of points linked to army ranks for good behavior and extra credit in class.

What made you decide to come back to teach at Beth El?

I was looking for a way to be of service and engage in the Beth El community. This is my second "tour" working for Talmud Torah as an adult, I also worked under Talia (three directors ago).

Is there anything that you hope/want our current students to take away from their time learning and growing up at Beth El?

I hope that our students continue having a desire to learn after they leave Talmud Torah. As an adult I've become more interested in continuing my learning in Jewish life and I wish I had stuck with that more when I was younger.

Anything else you'd like to share?

Talmud Torah is the best! Enjoy it while you can.



Jacob and some of the kids at the Purim Carnival

(Jessie, cont.)

What made you decide to come back to teach at Beth El?

I spent a lot of time at Beth El as a teen as a member of the USY board, a Madricha and then teacher, a tutor, and as a student in Rabbi Sager's Midrasa class; I used to bring my homework and/or a sleeping bag on Sundays and hang out in the building between meetings and events. It felt natural to come back as a teacher and Kadima advisor when I was in college to help create the experiences that I enjoyed so much for others. Moving into the B'nei Mitzvah Tutoring Coordinator role has allowed me to continue to do this, while connecting with a broader part of the community.

What are some differences in the school between now and then?

The biggest one seems to be scheduling - from grades 3-6, we were in class Mondays, Wednesdays, and Sundays (lower grades only Sundays, 7th grade M/W PLUS Shabbat)! The curriculum has also evolved a lot over the years. From a B'nei Mitzvah perspective, there's been a huge focus shift from Haftarah and Musaf to Maftir and Shacharit.

Is there anything that you hope/want our current students to take away from their time learning and growing up at Beth El?

I hope that through their time at Beth El, they find at least one thing that resonates with them, and continue to explore and connect with that through a Jewish lens and Jewish communities throughout their lives. For some, this may be through T'filah/prayer, others may connect more to Israeli culture, the social aspects (like Kadima, USY, or Camp), a common history, Tikkun Olam/social justice, or food.

Anything else you'd like to share?

I'm incredibly lucky and grateful to continue to be a part of the community where my dad, sister, husband, and I all became B'nei Mitzvah. I'm excited to begin engaging with Beth El as a "real grown up," now that I have kids of my own. :-)

Coming soon!

Saturday, September 15: 1st day of B'nei Mitzvah Peer Tutoring with Jessie

Sunday, September 16: 1st day of Talmud Torah for PreK-7th grade

(Opening Assembly w/parents at 9:30am)

Sunday, October 7 or 14 (to be confirmed!): Kickoff AlephBet/PreKadima event!



BEDUSY: Chapter of the Year



Beth El Durham USY (BEDUSY) won Chapter of the Year in the Seaboard Region! This is an incredible honor for our community, and it validates the commitment and hard work that we have invested into youth programming here at Beth El.

In the 2017-2018 academic year, we had fifteen USY (high school) chapter events, seven of which were USY board member planned/led, with an average of seventeen USYers in attendance. We also had ten Kadima (middle school) chapter events, three of which were USY board planned/led, with an average of twelve Kadimaniks in attendance. Over the year, we have engaged nearly 100 teens in the greater Triangle community through unique and innovative programs, such as Teen Takeover Shabbat, Mimouna, glow-in-the-dark capture the flag at Beth El After Dark, and a college tour with Havdallah at NC State Hillel.

In addition to our regular local events once or twice each month, we have been excited to witness growth in participation by Beth El teens at regional events and conventions. These conventions offer a unique experience to reinforce an authentic connection to Jewish tradition and ritual, while also building friendships and demonstrating how fun it is to be Jewish.

Teen programming at Beth El Durham has a bright future, and we look forward to the 2018-19 school year and beyond. We have a new, highly-qualified USY Board* that was elected by the USYers this past May, and many new ideas for growing our chapter. We would like to continue to increase our representation at regional events, as well as find ways to reach out to teens in the community who are not currently involved. We hope to implement new ways to ease the transition from pre- to post-B'nai Mitzvah, with more peer-to-peer programs for Kadimaniks and the younger students in Talmud Torah. We are also looking to expand our outreach and facilitate meaningful engagement between our teens and Jewish college students/recent college graduates.

We are extremely proud of our teens and the passion that they pour into this community. We are also grateful to our Beth El community members who have contributed their time (errands, phone calls, carpools, etc.) and money to support the growth of our chapter. Despite living in a smaller Jewish community, within in a state where Jews are .4% of the population, our chapter is a force to be reckoned with! In the words of our 17/18 Chapter President Eliana Davis, "Beth El Durham USY has developed so much over these three years. We've transformed from just that one chapter from North Carolina to the Chapter of the Year. I can't wait to see how this chapter grows in the coming years."

* Mazal tov to the new USY Board 2018-2019! We can't wait to see what you have in store for us!

President -- Sydney Kirsch

Israel Affairs VP -- Eliana Davis

Religion/Education VP -- Levi Price

Social Action/Tikun Olam VP -- Jason Dadolf

Membership/Kadima VP -- Ariella Richman

Communications VP -- Adam Kirsch

Averyl Edwards
Director of Teen Engagement

Breaking Down Walls at the Kotel



I have always had a complicated relationship with the Western Wall.

My Birthright trip in 2015 was the first time I actually saw the Kotel in person, but instead of having the spiritually moving experience that I had long anticipated, I ended up crying angrily into my trip leader's shoulder. It infuriated me that, in the most sacred place in Judaism today, I as a woman was not allowed to do the very things that help me mark a space as holy: wearing a kippah/tallit, reading Torah, or even singing out loud.

When I found out that the Conservative Yeshiva (CY) in Jerusalem, where I was going to be studying this summer, had a weekly minyan at the egalitarian part of the wall (by Robinson's Arch), I was cautiously optimistic that maybe my feelings would start to change.

Participating in the CY's minyan at the Kotel was indeed the very powerful experience I had longed for. Not only did I count towards the minyan, but I could wear my flowery pink and blue tallit, my kippah with hearts on it, and I even wrapped tefillin. We davened Shacharit led by a lesbian woman, and, as I heard my soprano voice echoing off of the wall, mixing in with multiple octaves of *Ozi V'Zimrat Ya*, I began to tear up at how beautiful Judaism can be when everyone can participate fully.

Midway through my third time in this minyan, I became distracted by the sound of some young voices behind me. I turned around and saw a couple of Haredi boys on the platform above us, where people will often have B'nei Mitzvah. They were snickering to themselves; this was almost certainly the first time they had ever seen a woman in tefillin. They called out loudly to their friends at the entrance, and we soon had an audience of about twelve Yeshiva boys looming over us.

Our group was uneasy. We had seen the ways that the Women of the Wall were treated by Haredim, and we all expected the worst. At one point during a more upbeat tune, the Yeshiva boys began to clap along with the beat. Our *shaliach tzibor* for the morning, Shaiya, just looked up at them and smiled, before starting to clap along himself. I joined him, impressed by the way he was able to take something that started as mocking and turn it into a nice moment of collaboration.

A little later, one of the boys dropped his kippah, and came down to our platform to jump over the railing and retrieve it from the archaeological site below. When he was coming back up, he got stuck, and one of the people in our group reached out a hand and helped him over. Slowly, the tone shifted. Our little audience became still and quiet on the platform, and someone said they even heard a few "*amens*" from behind us as we recited *kaddish*.

When it came time for us to head back to the Conservative Yeshiva, the boys were lined up against the railing as we passed. One of them asked Shaiya what group we were, and he explained that we were an egalitarian, Masorti* Yeshiva. The boys then peppered Shaiya with questions such as, "Why did you include the *imabot* (mothers) in the Amidah?" and other things that showed they had really been listening. He ended up staying back and talking with them for another half hour, answering all of their thoughtful questions.

I followed up with Shaiya afterwards to hear more about their conversation. He said that they had expressed genuine interest, jumping at this rare opportunity to learn another perspective. I told him, "You know, this was probably an experience that they're going to remember for the rest of their lives."

I know that I will.

Averyl Edwards
Director of Teen Engagement

**Masorti, or Traditional, is a general term for Jews who are somewhere between Orthodox and Reform, which varies in different communities, but is largely comparable to the Conservative Movement.*

Meet Your Committee Leadership

Chevre Kaddisha (Burial Society): David Klapper
Community of Caring: Ann Leibel and Beth Goldstein
Finance: Syd Miller
House: Dan Schnitzer
Kol Koloteinu: Krisha Miller
Lifelong Learning: Donna Goldstein and Susan Hill
Membership: Kim Bardy Langsam

Men of Beth El (MoB): Mike Resnick
Orthodox Kehillah: Phillippe Chemla
Ritual: Randi Smith
Social Action: Hope Hartman
Sisterhood: Tal Lewin Wittle
Synagogue Life: Tal Lewin Wittle
Va'ad HaChinnuch: Scott Schwartz

Sisterhood

Beth El Sisterhood enhances connections among women in our congregation by fostering a collegial and positive environment. Our mission is to understand and strengthen Conservative Judaism in the home, synagogue, and community. To support our mission, we provide programs that educate, entertain, and inform Jewish women locally.

Last spring, Sisterhood enjoyed a busy couple of months! In April, we shopped, cooked, prepared, and served Chaverim Lunch with Jewish Family Services. We also enjoyed schmoozing with and getting to know some of the seniors in our community. In May we held our annual potluck brunch and elections, and met for some special text study on Shavuot.

For the upcoming year, Sisterhood is planning mitzvah undertakings with Jewish Family Services and Beth El's Community of Caring, educational opportunities through a Book Club, and a class on learning the Friday Evening Service, and community activities, including the Chanukah Bazaar and Sisterhood Shabbat. To learn more about Sisterhood, please come to the Welcome Brunch on October 14!

Tal Lewin Wittle
Sisterhood President



Beth El Sisterhood Board, April 15, 2018



Shul at the Pool, June 22, 2018

Synagogue Life

The Synagogue Life Committee provides special services and programming to the Beth El community. We'd like to thank everyone who came to Shul at the Pool in June and brought a yummy dish to share! We hope everyone enjoyed the ice cream too!

The Community Card (an annual Synagogue Life tradition) is ready for you to "send" Rosh Hashanah greetings to your Beth El friends (visit the High Holiday page on the website). This year proceeds from the Community Card will go towards a thank you gift for our generous neighbors at Trinity Avenue Presbyterian Church. Later in the fall, the Synagogue Life Committee will send Chanukah Care packages to college students and gather our local friends for Chanukah Game Night. Don't worry, our favorite event, the Community Shabbat Dinner, is planned for the spring!

Tal Lewin Wittle
Synagogue Life Committee Chair



One day, Honi ha-M'gal (The Circle Maker) was walking down the road when he saw a man planting a tree. Honi asked the man how long it will take for the tree to bear fruit. The man answered, “seventy years.”

“And do you think that you will live another seventy years?” Honi inquired.

The man put his shovel down, looked up and responded, “perhaps not. However, when I was born into this world, I found many carob trees planted by my father and grandfather. Just as they planted trees for me, I am planting trees for my children and grandchildren so that they will be able to eat the fruit of the trees.”

Alex and I think of this story often as we grow literal fruit trees in our yard, that we hope one day will bear fruit for generations to come. Now with two kids of our own, we think both about their daily needs as well as the people that they will become and communities that they will be a part of. We know that each of them will forge their own path through the wilderness, yet we also know that it is our responsibility to ensure that the wilderness is full of trees, literally and figuratively.

As we reach skyward to create a verdant future for our kids, we remain rooted in the values set by our parents and the generations before us; *tzedaka*, *gemilut-basadim* and *kehillah*: charity, acts of loving-kindness and community.

Beth El represents the best of those values and we want that to endure. Therefore we know that committing to the Life and Legacy campaign is the right choice for us. This form of future giving is a comfortable way for us, as a young family, to make an enduring commitment to our community and a way to leave fertile soil for the next generation, just as was done for us. We hope that young community members and young families will join us.

Dan and Alex Schnitzer



The Life and Legacy Committee is working to fulfill the ever important need to plant seeds to grow our Synagogue Endowment. We are being supported by a national effort created by the vision of Howard Grinspoon, whose organization has raised millions of promises to leave a legacy. Members of our committee may contact you; better yet, you may reach out to us by contacting Alan Friedman at alan@betheldurham.org or Bob Gutman at ragutman@thegutmans.net for more information and to help us ensure a bright future for Beth El.

Eric Pas Jewish Camp Scholarship Update

I am proud to share with you that this summer has been 20 years since our family established the Eric Pas Jewish Camp Scholarship Fund. Over the past 20 years we have sponsored 75 children and distributed \$52,800! This summer we sponsored five children through the scholarship fund. Two children went to JCC Camp Shelanu, one went to Camp Ramah and two went to Jewish camps in Raleigh.

I would like to encourage as many of you as possible to make donations to this fund to help our Beth El families send their children to a Jewish summer camp. I believe that it is more imperative now than ever before; however, camp is expensive. I would also like to ask all those families that have received scholarship funding over the years to consider making a \$54.00 donation into the fund for each child that has received funding.

Your donations into this valuable fund will continue to keep the fund alive and active.

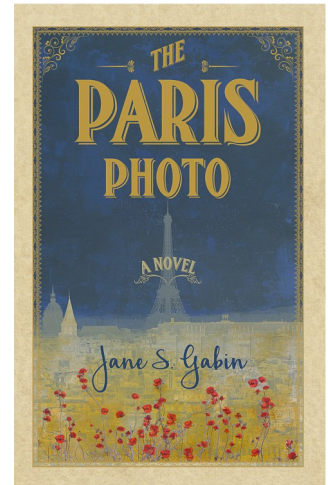
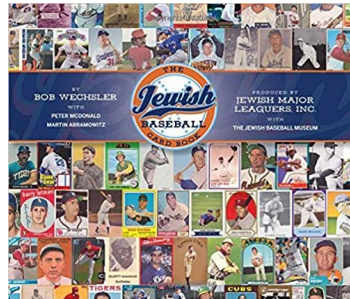
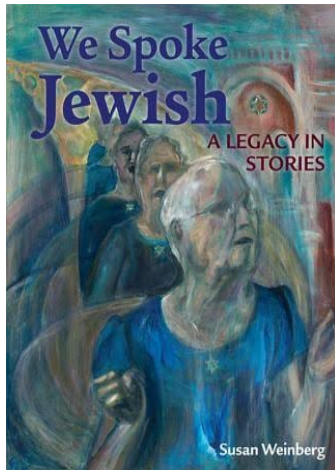
With much appreciation,

Michele Pas

Lifelong Learning

The Life Long Learning Committee has been working hard to bring great programs to Beth El for the coming year. See below for a schedule of confirmed events, and check the calendar and weekly announcements for additional events, times, and locations as they become available. You'll also find the schedule for Lunch and Learn, Shabbat Shiurim, and Parsha Studies. We hope to see all of you at these exciting events!

For further information, contact Donna Goldstein at Dgold867@aol.com, or Susan Hill at sgmhill@gmail.com.



October 25	Bob Wechsler "The Jewish Baseball Card Book"
October 28	Tzitzit Tying Workshop with Laura Brody Weaver
December 13	Jane Gabin, "The Paris Photo"
January 17	Margie Satinsky discusses the opera "La Juive" ("The Jewess")
February 28	Susan Weinberg, "We Spoke Jewish: A Legacy in Stories"
March 14	Ariel Burger, "Witness: Lessons from Elie Wiesel's Classroom"
May 16	Rich Richman, "Racing Against History"

Social Action Committee

Since April, Social Action has engaged in a variety of activities and has invited members of the Social Action Google Group and the whole congregation to participate in these and other activities in our community. Many have focused on food insecurity, the needs of refugees and immigrants, and have been in partnerships with TAPC's Social Action group. Food-related activities include ongoing and emergency drives; we donate food to at least five food banks. We also provided lunches for students in Partners for Youth Opportunities. One TAPC partnership involved providing and bagging food for Durham students for the Teacher Advocacy Day.

Refugee/Immigrant-related activities include spearheading an interfaith resolution pressuring the government to stop the Zero Tolerance policy and separating children from their parents at our country's border. This resolution was unanimously supported by Durham Congregations in Action. We have also advertised and participated in a variety of fundraisers for immigrants/refugees.

We are also participating in TAPC's Documentary Film series, and will be sponsoring a screening of "The Other Son" on November 28, 7:00 pm at TAPC. Rabbi Greyber will introduce the film and conduct Q & A afterwards.

As a major new initiative, we are partnering with Trinity Park Neighbors on a Habitat for Humanity build. Ground-breaking was July 14, and building will occur over 3-4 months. We have a Beth El work day scheduled for October 28 from 12:30-3:30 pm at 115 E. Enterprise St. in Durham.

Also on the horizon are the High Holiday Food Drive, TAPC's Fall Fundraiser, and, on November 11, the Bermans' annual What's Not to Like? Yiddish Songfest, a benefit for Urban Ministries of Durham.

Hope Hartman
Social Action Committee Chair



*Left: Hope Hartman and Bob Wechsler with
Partners for Youth Opportunity
June 19, 2018*



*Right: Beth El and TAPC volunteers packing
meals for CC Spanliding students
May 14, 2018*

Community of Caring

*Did you or a family member recently have surgery or a have prolonged illness? Are you expecting a baby?
Are you ill and living alone? Did you recently experience a death in your family?
Do you need extra support due to an unexpected life event?*

The Beth El Community of Caring Committee is here to help you navigate these difficult circumstances and to celebrate joyous occasions. We support each other during times of illness and surgery, comfort the bereaved, connect with congregants living alone, and provide specific help, such as: meals (of condolence, for those who are sick or recovering from surgery or childbirth); caring calls; friendly visits; occasional rides.

If you or someone you know needs support, or if you would like to join our caring network, please contact Sheri Hoffman, sheri@betheldurham.org or 682-1238. We will respect your privacy as we offer help and support.

"If you ever break both of your wrists at once, have no fear! The Beth El Caring Committee is here! If you can't turn door knobs or button your shirt or use a fork, and sadness is saturating your soul, despair not! Rhoda will waltz through your back door yelling, 'I have hard-boiled eggs AND I peeled them!' Or Andree will drive you to work, even if you can't zip up your briefcase and its contents spill onto the car seat. I could never thank you all enough, as well as Ann, Anne, Karen, Beth, Mary Joan, Elliot, Rachel, Evelina, Claire, and everyone else who so graciously gave me sustenance and support during a very rough time. Though I'm still recovering and have months of rehab left, maintaining my well-being would have been impossible without you all!" -Leslie Rachael Nydick



Knitting Chevra

The Beth El Knitting Chevra meets on the second Sunday of each month from October through May. This year our first meeting will be Sunday, October 14, 10:00 to 11:30 am, meeting place to be determined. We normally meet at Beth El, but during the renovation we have been meeting in members' homes.

Currently, we are making chemo caps for kids. We say knitting, but we have many talents; crocheting, hot gluing, you name it! All are welcome. Any questions, be in touch with Hunter Levinsohn or Gladys Siegel.

A New Chuppah for Beth El

Are you interested? Plans are afoot to create a new chuppah for Beth El. The only thing decided so far is that we will be doing this and that we will be starting to work in the fall. If you are interested, please get in touch with Hunter Levinsohn (hunter.levinsohn@gmail.com). One of the ideas is to recycle some of the Bar and Bat Mitzvah kippot into the design.

Gabbaim at Beth El

WOULD YOU LIKE TO LEAD SERVICES?

OR

WOULD YOU LIKE TO LEARN TO LEAD SERVICES?

If so, please contact: Bernie Fischer at bernie.fischer@duke.edu OR
Adam Levine at adamsimonlevine@gmail.com OR David Rubin david_s_rubin@hotmail.com

WOULD YOU LIKE AN ALIYAH?

It is OK if you do not know Hebrew. We can provide you the transliteration ahead of time to practice.

If you do not want to have to say anything, how about trying Gelilah (wrapping the Torah)?

If you are interested, please email aliyot@betheldurham.org and Bernie Fischer or Sol Levine will be in touch.



Photo Credit: Anna Carson DeWitt

Fostering Discussions about Israel



As Debbie Goldstein discussed a few months ago, Beth El is working on several projects to foster more learning and discussion internally around Israel. We hope these projects will allow our community to have open discussions about Israel, and allow us to learn various viewpoints from our peers. Below are descriptions of two programs that will take place this fall. The Israel Dialogue Sessions will be led by Rabbi Elana Friedman and Leslie Winner. We recommend you attend one session, as the topics for each will be the same. The course titled "Jewish Values and the Israeli-Palestinian Conflict" will be taught by Rabbi Greyber at the Levin JCC, and will consist of 12 classes, 2.5 hours each. Registration is required for the course, and there is a discounted fee for Beth El members. The course has been subsidized by the Jewish Federation of Durham Chapel Hill, Beth El Synagogue, Kehillah Synagogue, and Judea Reform Congregation.

Israel Dialogue Sessions

Join your fellow congregants for a candid conversation about Israel. On the evenings of October 18, November 29, and January 10, Rabbi Elana Friedman of Duke's Hillel, Jewish Life at Duke, assisted by Beth El's Vice President, Leslie Winner, will facilitate discussions, just for Beth El members, about Israel. Israel is an undeniable part of modern Jewish identity. Are you concerned about Israel's security? Do you struggle with the plight of Palestinians in Gaza and the West Bank? Are you proud of all that Israel's achieved in its first 70 years? Does Israel feel foreign? Or like home? Are you unsure what you think? All Beth El members are welcome to participate. Each session is limited to 25 participants. We won't be teaching the "whats" and "whys." Our time together will focus on listening to each other, our hopes and dreams and stories about Israel, and on how we can have constructive dialogue about a place that means so much to many. This is a chance not for persuasion or politicking, but for us to better understand one another and, in doing so, to better understand ourselves so we can move forward together as a trusting community. Exact time and location place are to be determined, but if you are interested, for now please hold one or more of these dates. Links to sign up will be included in future weekly announcement emails.

Jewish Values and the Israeli-Palestinian Conflict Course

This class will not determine the fate of the Israeli-Palestinian conflict, but how we speak with each other about the conflict will determine what sort of Jewish community we have. This course aims to deepen our communal discourse about one of the most complex and divisive set of questions in modern Jewish life.

Based on curricular materials from the Shalom Hartman Institute in Jerusalem (including video lectures by Hartman faculty), this course will examine Jewish narratives about Israel and unpack the complex meanings of peace in Jewish tradition. Participants are invited to explore the ideas and values that animate different attitudes toward the conflict and how these values shape their own political understandings.

Classes will be taught by Rabbi Greyber. The course consists of a mandatory introductory session on September 27, followed by 12 course sessions on select Thursdays and Sundays from October through May at the Levin JCC. For more details and a link to register, visit the Levin JCC website: <https://levinjcc.org>.

BE Modernization and Expansion (BEME)

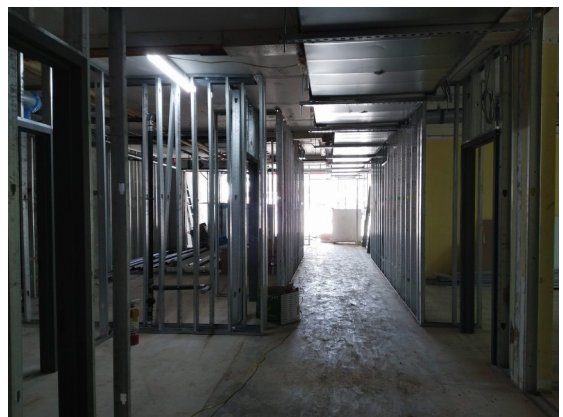
We have now been working on the building for eight months, the demolition phase has been completed and the large storm retention pit has been completed (finally!). Our contractors are busy installing electrical systems, plumbing, wiring and heating/cooling systems. They are working through the rain and the heat and working with our neighbors to ensure minimal disruption and noise. If you drive by the site, you might notice that they have started on the new additions that will go on the front and the side of the building, so you should be able to see progress on those elements.

We are working on putting plans in place for the interior and striving to plan ahead and avoid changes later in the process (and associated costs!). We have finalized the plans for audio, IT and security, and we are putting systems in place which will serve our community for many years.

We are making decisions on flooring and furniture for the new building and the sanctuary. There are many factors in deciding the final chairs for the sanctuary, including comfort and cost. We hope to have arms on one third of the chairs – so if we configure them correctly, every person in the sanctuary would have access to an arm. All chairs will have book shelves underneath to hold both of our books. We know we can't make everybody 100% happy, but please know we are spending a lot of time and effort on this and we are trying!

Steve Herman is working on wood elements using the wood from our pews, including Mezuzot and a hand washing station. We are working with a group of students from Riverside High School on the replacement Memorial Board. We are building a home that will be welcoming and comfortable and make us proud.

Sandy Berman





Our Story, Our Time Capital Campaign Update August 2018

While it may be summertime, the Beth El renovation and campaign teams have not taken a vacation from their efforts to complete this historic renovation to our shul!

As of August, the construction team has been hard at work for eight months on infrastructure to ensure that our electric, water, heating and cooling systems will be efficient and in good working order for many years to come. We have started installing footings and structure for the new additions to the building, so if you drive by, you can see the progress. Community members are involved in many aspects of the project, including furniture, metal work, and the new Memorial Board, with which a group of students from Riverside High School is helping us. You can follow the progress on the website by clicking on Renovation Photos/Videos on the homepage.

Meanwhile, the *Our Story, Our Time* Campaign continues to raise the \$6 million needed to cover the full costs of making our synagogue more welcoming, accessible, safe, and secure. The Beth El community has been incredibly generous, contributing \$5,525,486 to date – leaving approximately \$475,000 more to finish off the Campaign.

It's not too late to help reach the Campaign goal! Every gift or pledge, regardless of size, will make a difference in keeping the project timeline on track and maintaining an affordable spiritual home for all who wish to be a part of our community. Don't forget, you can make a pledge payable over multiple years, to help you make the greatest impact possible. And all donors who wish to be recognized will be honored through a campaign donor display in the newly renovated shul.

Please contact one of us if you have questions about the Campaign, including naming opportunities, or if you are ready to make your commitment.

Thank you for considering how our generation can help write the next chapter in the Beth El story!

Nathan Bearman
Campaign Co-Chair
nathan@furniturelab.com
919.618.9011

Gary Zarkin
Campaign Co-Chair
gzarkin@gmail.com
919.699.7282



We are grateful to these donors who have contributed more than
\$5.5 million to the *Our Story, Our Time* Campaign.
We're less than \$500,000 away from goal!

Campaign Donor Honor Roll
(Donors as of July 24, 2018)



(\$500,000 & above)
Ralph & Renee Snyderman



(\$250,000-\$499,999)
Anonymous (1)



(\$100,000-\$249,999)

Anonymous (2)
Leah Austin
Harvey & Sandra Cohen
The Gad & Marlene Janay Foundation
Joel L. Fleishman
Michael Frank
Gail Freeman & Sue Gidwitz
Sam Gross
Annette Kirshner
Anita & Arie Lewin
Michele Pas & Barry Poss
James Tulskey & Ilana Saraf
Gladys Siegel



(\$50,000-\$99,999)

Anonymous (4)
Nathan & Rachel Bearman
Shula & Stephen Bernard
The Davis/Rapp/Ornstein Family
Helen & Daniel Egger
David & Carrie Goldman
Donald & Sheila Goldstein
Laura & Robert Gutman
Lynne & Jeff Koweek/Barrie & Jean Hurwitz
Jill Kaplan
Susan & David Kirsch
Susan & Joel Leeb
Sharon Van Horn & Steve Lerner
Eric & Carol Meyers
David & JoAnn Rubin
Judith Krebs Snyderman
Henry Greene & Marilyn Telen



(\$36,000-\$49,999)

Anonymous (1)
Andree Allen & Larry Kodack
Stanley & Diana Levy
The Resnick Family
David Sontag



(\$18,000-\$35,999)

Anonymous (2)
Tom Keyserling & Alice Ammerman
Nicole & Philippe Chemla
The Derby Family
Frank Dworsky
Eli & Josh Evans
Brenda & Brian Ginsberg
Alice & Lewis Gold

Beth & Adam Goldstein
Cheng Li & Benjamin Goldstein/
Susan & Robert Goldstein
Mary Butler & Philip Goodman
Michelle Shrott & Jeffrey Krolik
Harold & Susan Kudler
The Langsam/Bardy Family

Ann & Kevin Leibel
Elaine & Lee Marcus
The Pitt Family
Leslie Winner & Gerald Postema
Myrna & Joel Schwartz (z"l)
Tobin Freid & Scott Schwartz
F. Eunice Shatzman

Judith & Lewis Siegel
Ellen & Phil Singer
Marjorie Strauss Flink & Charles Flink/
Betsey Strauss
Gabriel Szulik &
Orit Ramler Szulik
Deborah & Jonathan Wahl
Gary & Abby Zarkin



(\$10,000-\$17,999)

Anonymous (3)
The Krell/Wolnek/Bearman Family
Rita M. Lichtman & Sheldon T. Becker
Beth El Sisterhood
Eric Mlyn & Judy Byck (z"l)
Rabbi Frank & Patricia Fischer
Laura Flicker
Lauren & Jonathan Gindes
Ronald & Pilar Goldberg

Ruth M. Greenberg
Jennifer & Rabbi Daniel Greyber
Elyza Halev & Jeff Spinner Halev
Sharon & Edward Halperin
Carol & Jimmie Haynes
Marilyn N. Hogle
Marsha & Samuel Horowitz
Eric Cohen & Sandi Kronick
Bob & Lynn Lefkowitz
Alan & Mary Joan Ruth Mandel
Roy Schonberg & Cheryl Marcus

Judith & Arthur Marks
Anne & Billy Pizer
Martin & Barbara Poleski
Ethan & Emma Rasiel
Leah Bergman & Edgar Roach
Claire & Howard Rockman
Beth R. Friedland M.D. &
Robert Rosenthal
Sabina & Rabbi Steven Sager
Jack & Diane Sasson
Elizabeth & Michael Schoenfeld

Merle & Robert Schwartz
Susan & Matt Springer
Hope Hartman & Bob Wechsler
Eric & Tal Wittle



We are grateful to these donors who have contributed more than
\$5.5 million to the *Our Story, Our Time* Campaign.
We're less than \$500,000 away from goal!

Campaign Donor Honor Roll
(Donors as of July 24, 2018)



(\$5,000-\$9,999)

Anonymous (3)	Daphne Friedman & Josh Granek	Norman Weiner & Laura Lieber	Rona & George Prince	Susan Slatkoff & Ronald Strauss
Adele (z"l) & Joel Abramowitz	Lawrence & Stephanie Greenberg	Cheryl & Mort Malkin	Diane Markoff & David Reed	Valerie Hausman Tucker & James Tucker
Karin Shapiro & Edward Balleisen	Linda Convisser & D. Bruce Guild	Cheryl & William McCartney	Evelyn & Michael Reed	Terri & Bob Tyson
Meg Anderson & Harold Baranger	Robert & Susan Hill	Krishna & Sydney Miller	Susan & Mike Roth	David & Laura Weaver
Beth El Chevra Kaddisha	Sue & David Klapper	Nancy & Peter Perault	Barbara & Simon Shane	Weinstein Friedlein Architects
Steve & Sally Brown	Lauri Klein	Kathy Bartelmay & Roger Perilstein	Rhoda Silver	Elizabeth & Jim Wells
Richard Cody	Jennifer & Michael Kornbluth	Trudi Abel & Noah Pickus	Sarah Stahmer & Michael Spiritos	Rina & Myles Wolf
Jane Gabin & Richard Cramer	Michael & Harriet Lakin	Diane & Mark Pozefsky	Cathy & Jonathan Stamler	Phil & Leigh Zaleon
Andrea & Kevin Ginsberg	Esther Lederman	Deborah Goldstein & Steve Prince	Alan & Maxine Stern	Mardi & Errol Zeiger
Donna Goldstein	Alice & Sid Levinson			



(Gifts Up to \$4,999)

Anonymous (6)	Meytal Barak & Michael Cohen-Wolkowicz	Sally Hicks & Richard Hart	Lori Bernstein & Doug Merrill	The Schnitzer Family
Paul Aaron	Michaela Davidai	Martha Hauptman	Eric Meyer & Erica Brody	Jacob Schonberg
Socomo Ortiz Monroy & Miguel Amador Hernandez	Sarah & George Denes	Sheldon Hayer	Melissa Segal & Aaron Miller	Valerie & Jerry Schreiber
Raina Elsner & David Andrews	Ana Maria Diaz Rocha	Megan Valentine & Ivy Hoffman	Sandy Portnoy Mills & Elliot Mills	Frances & William Schwartz
Rachel & Ya'akov Ariel	Margaret Donnelly	Pascale Lecuire & Brooke Jenkins	Melanie Mintzer	Katie Schwartz
Susi Lief & Arthur Axelbank	Averyl Edwards	Deborah & Irwin Kahn	Lorraine Morley	Jill Madsen & Ali Serrioz
Gisela & Ricky Baler	Ellen Erlichman	Ann Barclay Kaplan & Stuart Kaplan	Ada & Bernard Most	Mr. & Mrs. Jay Shechter
Robin Barth	Jenny & Scott Eskildsen	Claire Payton & Jonathan Katz	Evelina Moulder	Yonat Shimron
Hana Baskin	Karen & Stuart Factor	Hadar Sasson & Tomer Katz	Harriet Moulder	April Singer
Lewis & Flicka Bateman	Sandy & Jim Fangmeier	Judith & Steve Herman	Lesley Stracks-Mullem & Jeremy Mullem	Leonard Singer
Fred Behrends	Shari & Bernard Fischer	Deborah Hirsch	Adele Nikolsky	Randi & Scott Smith
Susannah Bell	Rebecca Fishman	Elika Bergelson & Zachary Kern	Leslie Nydick	Soigné Events
Pamela Mund & Jon Bellman	Rabbi Jerome & Carole Fox	Harold Kohn	Diane & Dale Pahl	Roberta & Herman Sperling
Jordan Etkin & Jonah Berger	Sheldon Freid	Charlotte & Hillel Koren	Edy Parker	Leonid & Lyubov Spevak
Susan & Morton Berkowitz	Lewis Margolis & Linda Frankel	Diane Meglin & Bruce Korn	Jennifer Parkhurst	Marlene & Chuck Spritzer
Dan Berley	Katherine & Samuel Fuerst	Annette & Tom Kronmiller	Lois & Isaac Price	Joyce Dworsky-Srou & Nino Srou
Shelah Bloom	Laura & David Gabrieli	Musla G. Lakin	Emily Levine & Matthew Rascoff	Sherry Samuels & Aviva Starr
Molly Whittington & Jeffrey Blumberg	Bernard Geller	Sylvia Leibel	Barbara Renner	Laura & Harold (z"l) Strauss
Lew & Wendy Borman	Jodie & Rabbi Michael Gisser	Pearl H. Levine	Rabbi Nicholas Renner	Nancy B. Strauss
Risa & Ira Botvinick	Valerie & Matthew Glassman	Sheila & Sol Levine	Rebecca & Marshall Rohde	Mara Buchbinder & Jesse Summers
Jonathan & Susan Breitner	Ricki & Larry Goldstein	Hinda Lind	Deborah & Robert Rosenstein	Sonya Ulrich
Marc Brettler	Sharon & Melvin Goldstein	Janet & Eugene Lipman	Caryn Rossi	Sarah & Noam VanderWalde
Brenda Brodie	Meredith Emmett & Galla Goodman	Susan & Robert Lopatkin	Barbra Roberman & Hal Sandick	Elsa & Julian Waller
Carla Fenson & David Bronstein	Nathalie Goodrich	Heather & Elliot Lowenthal	Natalie Blackburn & Shawn dos Santos	Sharon & David Weber
Sarah & Scott Bryce	Harlan Joel Gradin & Elise Goldwasser	Jessie Zaleon Lunk & Daniel Lunk	Cheryl & Leslie Saper	Jonathan Weiler
Marshall Botvinick & Karen Burns	Sam Grossinger	Sharon & Edward Lunk	Margie Satinsky	Daniel Weinreb
Lorri Gudeman & Doug Carlton	Chellie Grossman	Laura & Max Mandinach	Louis Sawyer	Amy Halberstadt & Anthony Weston
Herb Carson	Lynne Grossman	Rebecca & Laurence Margolese-Malin	Karen Scher	Marni & Howard Wizwer
Josiane & Barton Cobert	Irene Hackel	Connie Margolin	Mical & Michael Schneider	Susan Enberg & Shirley Zarkin
Robin & Moss Cohen	Julie Mell & Malachi Hacohen	Barbara & Jeffrey Margolis		

New Member Spotlights

Meet Beth, Mike, Joshua (10), and Ellie (8) Null!

Why Beth El? When we first visited Beth El, everyone was very friendly and welcoming. Services are open and inviting, and many families attend with their children. My children made friends with the other kids the first time they went to services. We were immediately embraced by the community, so the choice became obvious.

We have lived in the Boston area for the past 20 years, but we are originally from New York and California. Beth brought us here to take a job as the Head of School at the Lerner Jewish Community Day School. Mike is a mechanical engineer and works remotely for Raytheon Company. We are new to the area but we are thrilled to be here. For fun, our family loves going camping and to the beach. We also love board games.

Meet Nicole, Michael, Sam (8), Margot (4), Esme (4) Blacksborg!



We decided to join Beth El after attending Yom Kippur services last year. We were both moved by Rabbi's d'rash. We also liked the combination of the conservative and the inclusive feel.

Michael grew up in NY and moved to the San Francisco Bay Area in 2001, where Nicole had grown up. We relocated to Durham in June 2017 to be closer to family on the East Coast and to enjoy Durham's culture and affordability.

Both of us are attorneys by training. Michael works for Wells Fargo Private Bank as an estate and legacy advisor. Nicole is Director of Legal Affairs for Qualys, Inc., a cloud-based security platform. For fun, we spend time with our three kids, Sam, who is a rising 3rd grader and Margot and Esme, our twin four year-old daughters. We also enjoy exploring life in Durham and have become Durham Bulls fans.

Beth El Welcomes the Following New Members to our Community

Jereme & Summer Albin

Corinne Bohling

Jason Dadolf

Oshrat & Steve Doriocourt

Sierra Fangmeier & Jose Gil

Ira & Nan Kolko

Stanley & Diana Kovler

Miguel Amador & Socomo Ortiz

Robin Briggs & Allan Polak

Jeremy Kohler & Eliana Schonberg

Stephen Sachs & Amanda Schwoerke

Richard (Dick) & Lois Sobel

Alan Friedman & Ian Velasco

Stories from Congregants and Friends of Beth El

How Beth El Impacted a Duke University Student 40 Years Ago

I was a recent graduate of Syosset High School on Long Island, NY over 40 years ago when I decided to venture almost a thousand miles away to attend Duke University. Arriving on East campus in late August, having never visited because I couldn't afford the trip, I wasn't sure what to expect. At times I felt like a young man in a strange land. I settled in well enough, but I knew the High Holidays were fast approaching and I was too swamped with class work to return home. This would be my first time away from the familiar surroundings of Midway Jewish Center.

I don't recall how I learned about Beth El, but I remember showing up for Rosh Hashanah services and was welcomed with open arms! Looking back years later, it seems so remarkable to be taken in so graciously. Such an act of kindness and love, just as the Reverend referred.

I'm sure many Jewish students like me have found comfort at Beth El over the years and I'm so glad to hear your congregation has flourished and grown. You will be able to continue to keep your doors open to visitors looking to keep the connection to their heritage alive while away from home.

All My Best Wishes,
Peter J. Deutch

My Point-in-Time Count Experience

On Wednesday night, January 31, I participated as a volunteer interviewer for the annual Point-in-Time Count of the homeless in Orange County. This is a federally mandated program that is carried out by Orange County Social Services in January of each year. The purpose is to count homeless people for the Census Bureau.

I was part of a group of three who visited Chapel Hill campsites. Most of the sites we visited were individual campsites and most of the residents were not there, which we were told was typical by the police officer who was part of our team. We did interview one woman who had been living in a condemned house for several years with no running water or electricity.

This was a new experience for me and these are some of my impressions. It was very well planned and we were carefully instructed on what to do. Each team included a police officer or a social worker. I was surprised that we visited no communities of homeless people; for the most part people live alone. I was also surprised at the young age of most of the volunteers. I think I was by far the oldest person.

The most important thing that I took away was that no matter how basic these dwellings are, they were people's homes and we needed to be respectful of that. These were not places in which I expected to find artistic expression, but I found handmade art in three of the seven sites. There is something very heartening about the human need to create beauty in any circumstance!

Hunter Levinsohn



Simchas

MAZEL TOY!

Beth El Durham USY,
Chapter of the Year, Seaboard Region

Richard Cramer and Jane Gabin,
on the birth of their grandson, Gabriel Tzvi, on May 8

Abby Gilbert, Ron Skupsky, and big sister Margalit,
on the birth of Rachel Livia, who arrived on Monday, July 16.

Lorri Gudeman,
Recipient of the Durham Chapel Hill 2018 Award for Excellence in Jewish Education



Do you have a simcha to share?
Please let us know by emailing
communications@betheldurham.org.

High Holidays 5779

SELICHOT SERVICES

Motzei Shabbat, September 1

Selichot Service 8:30 pm —at the Levin JCC

EREV ROSH HASHANAH

Sunday, September 9

Orthodox Kehillah Services 6:30 pm**

Services 7:00 pm*

Babysitting 7:00 pm*

(Pending sufficient enrollment)

ROSH HASHANAH DAY 1

Monday, September 10

Services 8:30 am *

Orthodox Kehillah Services 8:30 am**

Babysitting 10:00 am*

Tot Tefillah 10:00-10:45 am*

Family Service 11:00 am-12:00 pm*

Tashlich- Chapel Hill, 4:30 pm

Tashlich- Durham, 4:30 pm

Orthodox Kehillah Services 6:30 pm**

ROSH HASHANAH DAY 2

Tuesday, September 11

Services 8:30 am*

Orthodox Kehillah Services 8:30 am**

Babysitting 10:00 am*

Tot Tefillah 10:00-10:45 am*

Family Service 11:00 am-12:00 pm*

SHABBAT SHUVAH

Saturday, September 15

Shabbat Morning 9:30 am

Trinity Ave Presbyterian Church

Orthodox Kehillah Services 9:00 am

Freedman Center

KEVER AVOT

Sunday, September 16

Sunday Minyan 9:30 am

Durham Hebrew Cemetery Visitation
10:30 am

<http://durhamhebrewcemetery.org>

KOL NIDRE

Tuesday, September 18

Babysitting 6:15 pm*

Services 6:30 pm*

Orthodox Kehillah Services 6:30 pm**

Candle Lighting 6:59 pm

YOM KIPPUR

Wednesday, September 19

Morning Services 8:30 am*

Orthodox Kehillah Services 9:00 am**

Babysitting 10:00 am*

Tot Tefillah 10:00-10:45 am*

Family Service 11:00 am-12:00 pm*

Orthodox Kehillah Yizkor 11:00 am**

Yizkor 11:30 am*

Study Sessions 4:00 – 5:00 pm*

NO TALMUD TORAH

Orthodox Kehillah Minchah 5:15 pm**

Minchah 5:00 pm*

Babysitting 6:00 pm*

Ne'ilah 6:15 pm*

Orthodox Kehillah Ne'ilah 6:15 pm **

Havdallah 7:58 pm

Break-Fast following services*

**Please note: Rosh Hashanah and Yom Kippur Main Sanctuary Services will be held at the Carolina Theatre, 309 W Morgan St. in Durham*

*** Orthodox Kehillah Services will be held at the Freedman Center*

Visit betheldurham.org/high-holidays for complete information on Beth El's High Holiday programs, and to read our High Holiday Guide.

*The High Holidays are a time when nobody should be alone.
We are very proud that Beth El does not collect or check tickets for services.
Donations are needed and helpful, but please know -- everyone is welcome.
All can come and be part of our spiritual community.*

High Holidays 5779, continued.

High Holiday Meals

Due to the synagogue renovation, we will not be hosting a pre-fast dinner this year. If you have extra places at any of your holiday meals, please open your home to one or more members of the Beth El family. If you need a place for a meal, please don't be shy! We will be delighted to arrange for hosts and guests to enjoy together.

To invite someone, or to request a place, please contact the office (919-682-1238) no later than August 31 for Rosh Hashanah, no later than September 7 for Kol Nidre/Yom Kippur, and no later than September 14 for Sukkot.

Community Card 5779

Beth El's Community New Year's Card is now on display, at both the Freedman Center and TAPC, waiting for you to "send" New Year's greetings to your Beth El friends. You can send those good wishes without having to sign and mail individual cards AND you'll be doing a double mitzvah: funds raised through the Community Card will be given to the "TAPC Thank You" Fund, which will be used to purchase a gift for TAPC showing our appreciation for all they have done for Beth El during our renovation. Participating in the card is easy: simply make a donation to the synagogue earmarked for the Community Card, and your name will be included for everyone to see.

Annual Food Drive—New Format This Year!

BE a mensch! Help combat hunger with your High Holiday donation.

The Beth El Social Action Committee is committed to helping alleviate hunger in Durham and neighboring communities. This year, because of the synagogue renovation, we are asking congregants to donate cash or Visa, Master Card or grocery store gift cards instead of collecting bags of food.

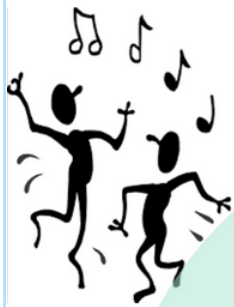
The food banks will purchase groceries to stock their inventory. Money and gift cards will not be given directly to those in need. This year we are supporting the following organizations: Urban Ministries, Jewish Federation, Iglesia Hispana Emanuel, Walltown Food Bank, Families Moving Forward, Food Bank of Central and Eastern NC.

How do I donate?

Go to betheldurham.org/high-holidays and look for the Food Drive link to make online monetary donations, or checks can be mailed to the Beth El office. If you write a check, write "High Holidays food drive" on the memo line.

Your donations of gift cards from Food Lion, Harris-Teeter, Walmart, Costco or Visa/Master Card will be collected at Erev Rosh Hashanah and at Kol Nidre services at The Carolina Theatre. You can also bring them to the Beth El office in advance.

No one should go hungry, and no one should have to choose between the necessities of life.
Start the New Year by BEing a mensch!



BETH EL SYNAGOGUE

tot service

ROSH HASHANAH, DAY 1
ROSH HASHANAH, DAY 2
YOM KIPPUR
10:00AM-10:45AM

geared towards families with children ages 4 & under
@ The Carolina Theatre!



contact Elisabeth:
elisabeth@betheldurham.org for more info

all are welcome! no registration or
synagogue membership required.



BETH EL SYNAGOGUE

FAMILY SERVICE

ROSH HASHANAH, DAY 1
ROSH HASHANAH, DAY 2
YOM KIPPUR
11:00AM-12:00PM

geared towards families with children in grades K-5
@ The Carolina Theatre!

contact Elisabeth:
elisabeth@betheldurham.org for more info

all are welcome! no registration or
synagogue membership required.

BEDUSY Presents...



The High Holidays Teen Lounge

Opens at **10am** on
Rosh Hashanah 1-2
& Yom Kippur

In the **Green Room:**
Backstage of the
Carolina Theatre

Open to all 6th-12th graders!

שנה טובה ומתוקה!!!



Starring:

Beth El Durham
USY & Kadima

Annual Honey Fundraising Sale!

Supplies are limited so place your orders now before we run out! Get your year's supply of delicious local honey and support our Talmud Torah at the same time!

1 JAR FOR \$7

3 JARS FOR \$18

Pre-order now by emailing Eric Cohen
(ericcohen@gmail.com) or purchase jars at Beth El.


Beth El
SYNAGOGUE
DURHAM, NC



Mourning Circle / Ma'agal Aveilut

High Holidays can be a poignant time for those in mourning as our Kever Avot/Cemetery Visitation takes place, as we say Yizkor on Yom Kippur and, more broadly, as we enter a season in which we contemplate the meaning of our lives. “Ma’agal Aveilut,” or “Mourner’s Circle” is an evening when people who are walking the journey of grief in our community can learn, share, get to know one another, and say kaddish together. It will take place Thursday, September 13 (between Rosh Hashanah and Yom Kippur) from 7:00 to 8:30 pm at the Freedman Center at Beth El and once again before Passover, on Thursday, April 4, 2019.

Sukkot, Shmini Atzeret & Simchat Torah at Beth El

SUKKOT DAY 1

Monday, September 24
Freedman Center
Services 9:00 am
Shaking the Lulav and Etrog

SUKKOT DAY 2

Tuesday, September 25
Freedman Center
Services 9:00 am
Shaking the Lulav and Etrog

HOSHANA RABA

Sunday, September 30
Freedman Center
Services 9:30 am

PIZZA-IN-THE-HUT

Sunday, September 30
Freedman Center
12:30 pm

SHMINI ATZERET

Monday, October 1
Freedman Center
Services 9:00 am
Yizkor 10:30 am

EREV SIMCHAT TORAH

Monday, October 1
Freedman Center
Services 6:30 pm

SIMCHAT TORAH

Tuesday, October 2
Freedman Center
Services 9:00 am



Yahrzeit Reminders

Elul		September		Tishrei		September		Tishrei		October
21	Jeanne Dreifus	1		4	Roberta Morris	13		22	Hylton Jaggard	1
21	Sondra Gevarter	1		4	Heinz Speier	13		22	Hanna Rachel Koren	1
21	Malvina Markman	1		5	Sydney Back	14		22	Lawrence Singer	1
22	Anne Levinsohn	2		5	Lottie Samuel	14		23	Israel Meyer Frohman	2
22	Julius Weinstein	2		5	Leveritt A. Wallace	14		23	Robert Strauss	2
24	Carrie Gladstein	4		6	Rifkie Kresses Birnbrey	15		23	Marcus Weston	2
24	Norma Lovins	4		7	Michel Baranger	16		24	Susana Levy	3
25	Jill Goldstein Lafrance	5		7	Pearl Cohen	16		24	Mary Schlesinger	3
26	Carol Bowen	6		7	Israel Gutman	16		25	Halina Gutman	4
26	Lewis Cohen	6		7	Lester Zauder	16		25	Rose Gutman	4
26	Anna Grossman	6		8	Melvin Gladstein	17		25	Cecille R. Lipton	4
26	Mollie Liptzin	6		9	Jeffrey Grossman	18		26	Kurt Schreiber	5
26	Jacob A. Ornstein	6		11	Morris Becker	20		27	Martin Leiss	6
27	Susan Cox	7		11	Israel Hurwitz	20		27	David Liptzin	6
28	Clarence Berman	8		11	Harry Rosenberg	20		27	Harry Lyons	6
28	Jerry Robins	8		12	Janet Harrison Broadwell	21		27	Alex S. Tulskey	6
29	Robert Lubovsky	9		12	Bernice Kahn	21		28	Albert Behar	7
29	Sidney "Chick" Mandel	9		13	Herbert Herzfeld	22		28	Sidney Brettler	7
29	David Alexander Rosefelde	9		13	William Jacob Jackson Jr.	22		28	Erven Gladstein	7
29	Sam Zarkin	9		13	Anna Lipschitz	22		28	Alberto Levy	7
Tishrei		September		18	Harry Harrison, Jr.	27		28	Paul Luebke	7
1	Paul Grossman	10		18	Morris Kaplan	27		28	Jennie Nachamson	7
1	Abraham Roskin	10		18	Louise D. Kushner	27		28	Leonard Sperling	7
2	Rhea Fishman	11		19	Julius Grossman	28		29	Ruth Shecter	8
3	Polly Salomon Gutman	12		19	Marya Kirshner	28		30	Eliot Kraft	9
3	Irene Silverstein	12		20	Morris D. Ashendorf	29				
4	Rebecca Emenitove	13		20	John Ullman	29				

Yahrzeit Reminders, continued.

Heshvan		October		Heshvan		October		Heshvan		November
6	Sara bas Yaakov	15		16	Treasure McClain	25		27	Leah Silver	5
6	Joseph George Shimm	15		16	Nathan Rafterman	25		27	Lillian Sperling	5
6	Kassel Siegel	15		17	Anna Marck	26		28	William Smith	6
7	Herman Bachenheimer	16		17	Rose Philipson	26		28	Chawa Eichenbaum Teichholz	6
7	Violet Pollack Richman	16		18	Arthur Concors	27		28	Malka Eichenbaum Teichholz	6
7	Helen Reiner Portnoy	16		18	Shirley Friedland	27		28	Naftali Teichholz	6
7	Polly Keyserling Sinnreich	16		19	Reuven ben Eliezer	28		29	Ellen Simon Singer	7
7	Edward R. Svetkey	16		19	Mildred Sass Slatkoff	28		Kislev		November
8	Lawrence Dubow	17		20	Joseph Poss	29		1	Shabbetai Ginton	9
9	Frances Rothstein	18		20	Yetta Rockman	29		1	Sylvia Parker	9
10	Alfred Carson	19		20	Shirley Schulman	29		1	Walter Reichwald	9
10	Alice Rosenberg Kline	19		20	Sylvia Shane	29		2	Eylon Shalev	10
10	Lola Marsh-Marcus	19		21	Howard Greyber	30		3	Estelle Cohen	11
10	Renee Rosenthal	19		21	Eric Ivan Pas	30		3	Charlotte Lynn	11
10	Abe Rosenzweig	19		21	Hattie Singer	30		3	Dorothy Schafitz	11
11	Jack Poncher	20		22	Sarah Behar	31		4	Lillian Mills	12
11	Sid Rancer	20		22	Marvin C. Goldstein	31		5	Louis Gladstein	13
12	Maryl Goldberg	21		22	Arnold Klapper	31		5	Sally Greene	13
12	Joseph Morrison	21		Heshvan		November		5	Harry Winner	13
12	Sandra Richmond	21		23	Fannie Romick	1		6	Sarah Kessler	14
12	Manuel Singer	21		23	Celia Shatzman	1		6	Frank Marcus	14
13	Sadie Greenberg	22		24	Larry Katz	2		6	Donald Oken	14
14	Stanley Barclay	23		25	Agnes Culp	3		7	Israel Park	15
14	Chaim Mordecai Finkel	23		26	Herbert Bailin	4		8	Ella Bloom	16
14	Florence Mintzer	23		26	Nora Barth	4		9	Daniel J. Schneck	17
15	David Helms	24		26	Sara Lieber	4		9	Leon Schneck	17
15	Harry Segal	24		26	Ida Stollwerk	4		10	Alfred Louis Gabin	18
16	Moshe Friedman	25		27	Harold Barth	5		10	Nathan Wilbur Gladstein	18
16	Freda Leiss	25		27	Mary Siegel	5		10	Philbert H. Hartman	18

Thank you to our donors!

Annual Fund

Ben Abram
Ya'akov & Rachel Ariel
Kelly Asher
Leah Meyer Austin
Steve & Margaret Bachenheimer
Robin Barth
Sheldon Becker & Rita Lichtman
Yochai Ben Haim & Shira Anderson
Steve & Shula Bernard
Andrew & Debra Bird
Shelah Bloom
Howard Bomze & Laura Quigley
Lew & Wendy Borman
Jonathan & Susan Breitner
David Bronstein & Carla Fenson
Steve & Sally Brown
Eric Cohen & Sandi Kronick
Micky Cohen-Wolkowicz & Meytal Barak
Ian Davis & Naomi Ornstein Davis
Jeff & Anne Derby
Peter J. Deutch

David Dreifus & Jennifer Sosensky
Ruth Dzau
Jim & Sandy Fangmeier
Joel Fleishman
Laura Flicker
Michael Frank
Kevin & Andrea Ginsberg
Matthew & Valerie Glassman
David Goldman & Carrie Muh

Rafael & Ashlyn Goldberg
Harlan Gradin & Elise Goldwasser
Jennifer & Rabbi Daniel Greyber
Lynne Grossman
Sam Grossinger
Bruce Guild & Linda Convisser
Irene Hackel
Jeff Spinner Halev & Elyza Halev
Sheri Hoffman
Sam & Marsha Horowitz
Jenna Hyland
Jill Kaplan
Tom Keyserling & Alice Ammerman
Michael & Jennifer Kornbluth
Tom & Annette Kronmiller
Sally Laliberte
Steve Lerner & Sharon van Horn
Sid & Alice Levinson
Gene & Janet Lipman
Eric & Sharon Lipp
Elliott & Heather Lowenthal
Theo Luebke
Alan & Mary Joan Mandel
Lew Margolis & Linda Frankel
Jon & Sean Meltzer
Doug Merrill & Lori Bernstein
Eric Mlyn
Lorraine Morley
Harriet Moulder
Leslie Nydick
Edy Parker
Michele Pas
Noah Pickus & Trudi Abel

Martin & Barbara Poleski
Mark & Diane Pozefsky
Steve Prince & Debbie Goldstein
Michael & Evelyn Reed
Jared & Jennifer Resnick
Howard & Claire Rockman
Michael & Susan Roth
David & JoAnn Rubin
Steve & Sabina Sager
Jack & Diane Sasson
Louis Sawyer
Yonat Shimron
Lew & Judy Siegel
Adam & Helene Singer
Ron Skupsky & Abby Gilbert
Philip & Annette Skoletsky
Larry & Miriam Slifkin
Judith Snyderman
Mike Spiritos & Sarah Stahmer
Joe & Lisa Stevens
Larry & Janice Stolzenberg
Ron Strauss & Sue Slatkoff
Jesse Summers & Mara Buchbinder
Gabriel Szulik & Orit Ramler Szulik
Sonya Ulrich
Jon & Debbie Wahl
Julian & Elsa Waller
David Weaver & Laura Brody Weaver
Jim & Elizabeth Wells
Dirk & Marlo Wilcox
Vince & Ivy Wingate
Gary & Abby Zarkin
Errol & Mardi Zeiger

Annual Fund with Tributes

Lois and Sanford Benjamin, in honor of Dr. David Kirsch receiving a special award for work he has done in the field of medicine

Sheila and Donald Goldstein, in memory of Sheila's parents, Roslyn and Harold Rose

Don and Sheila Goldstein, in honor of Richard Cramer and Jane Gabin's new grandson, and Danielle Lipp's Bat Mitzvah

Donna Goldstein, in honor of Jacki and Mike Resnick's 55th wedding anniversary

Donna Goldstein, for the speedy recovery of Howard Goldstein

Larry and Stephanie Greenberg, in honor of their son Michael's graduation from medical school

Sheldon Hayer, in memory of Tziporah Weingarten, mother of Itzik Lebovich

Pearl Levine, in memory of Samuel Levine

Susi Lieff and Arthur Axelbank, in honor of the Beth El Executive Committee

Jonathan and Florence Lovins, in memory of Norma Lovins

Evelina Moulder, in memory of Adele Abramowitz

Adele Nikolsky, in memory of her mother, Maria Mikhalevsky

Steven Rose, in memory of Estelle Rose, mother and grandmother

Simon and Barbara Shane, in memory of Simon's father, Bernard Shane

Scott Snyder and Rachelle Bienstock, in memory of Scott's parents, Arlene and Barry Snyder

Susan and Matt Springer, in memory of Susan's father, Jerry Robins, and Matt's mother, Myrna Springer

Capital Campaign Fund with Tributes

Natalie Blackburn and Shawn DosSantos, in honor of Arthur Axelbank performing the Brit Milah for their son, Jerome

*This list contains donations made to Beth El from March 22-July 31. If your name is missing, please email info@betheldurham.org.

Thank you to our donors!

Capital Campaign Fund, cont.

Jeff Blumberg and Molly Whittington, in honor of Arthur Axelbank performing the Brit Milah for their son

Risa and Ira Botvinick, in honor of Karen Burns and Marshall Botvinic

Raina Elsner and David Andrews, in honor of the B'nai Mitzvah Class of 2018

Richard Hart and Sally Hicks, in memory of Ricka Hart and John W. Hicks

Rebecca and Laurence

Margolese-Malin, in honor of Mardi Zeiger "because she is wonderful"

Mr. and Mrs. Jay Shecter, in memory of Harold Strauss

Cemetery Fund

Joel Abramowitz, in memory of his mother, Freda Abramowitz

Steven Bachenheimer, in memory of his beloved mother, Friedel Bachenheimer

Sheldon Becker and Rita

Lichtman, in memory of Sheldon's father, Leonard Becker

Rachelle Bienstock and Scott Snyder, in memory of Rachelle's father, Julius J. Bienstock

Lynne Grossman, in memory of her mother, Grace Gladstein

Sheldon Hayer

Sheila and Sol Levine, in memory of Sheila's mother, Augusta Korkin, and Sol's grandmother, Lena Goldberg

Chevra Kaddisha Fund

Sheldon Becker, in memory of his wife, Leslie Burg Becker, and mother, Jeannette Becker

Chevra Kaddisha Fund, cont.

Norma Gindes, in memory of her beloved father, Herman Schulman

Sheldon Hayer

Susan Leeb, in memory of her parents, Esther and Mandel Silverman

Sol and Sheila Levine, in memory of Sol's mother, Riva Levine, and grandfather, Samuel Levine

Community of Caring

Laura Flicker, in honor of Rhoda Silver

Laura Flicker, in memory of Joel Schwartz

Nathalie Goodrich, in memory of her mother, Annie S. Levy

Michelle Shrott and Jeff Krolik, in memory of Carl Oshrain and Shirley Bloom

Earl and Gladys Siegel Endowment Fund

Sandy Berman, in honor of Gladys Siegel's birthday

Carol and Jimmie Haynes, in memory of Joel Schwartz and Stuart "Buzz" Marcus, brother of Lee Marcus

Lucy Morrison, in memory of her mother, Pearl Morrison

David and JoAnne Rubin, wishing Ann Derby much success with her new knees

David and JoAnne Rubin, in celebration of Bob Gutman's 80th birthday; Pearl Levine's 90th birthday; the birth of Gabriel Tzvi Resnick, grandson of Jane Gabin and Richard Cramer; the B'nei Mitzvah of Danielle Lipp and Isaac Janiak Stein; Diane Markoff's promotion to Professor at NCCU; Mary Joan and Alan Mandel's 50th wedding anniversary

Earl and Gladys Siegel Endowment Fund, cont.

David and JoAnne Rubin, in honor of Michelle Shrott for being chosen JCC Volunteer of the Year; Merle Schwartz for being chosen JFS Volunteer of the Year; Drew and Kim Langsam for winning the Federation Young Leadership Award; of Lorri Gudeman winning the Grinspoon Excellence in Jewish Education Award

David and JoAnne Rubin, in memory of Adele Abramowitz; Howard Margolis; Harold Strauss; Adele Elkin, sister of Sam Gross; Mildred Rosenbaum; mother of Jeff Spinner Halev; Arlene Snyder, mother of Scott Snyder; Blanche Wahl, mother of Jon Wahl; Leah Albert, grandmother of Elisabeth Gerson and Rachel Albert; Tziporah Weingarten, mother of Itzik Lebovich; Carl Oshrain, father of Mindy Oshrain; Stuart "Buzz" Marcus, brother of Lee Marcus; John Hicks, father of Sally Hicks; Shirley Bloom, mother of Shelah Bloom; Amy Halberstadt's brother, Ira Halberstadt; Diane Meglin's father, Nick Meglin

Hal Sandick and Barbara Roberman, in memory of Hal's mother and father, Margot and Sy Sandick

Gladys Siegel, in memory of Tom Williams, Debbie Rosenstein's brother-in-law; Carl Oshrain, M.D., father of Mindy Oshrain; Sid Levinson's sister, Andrea Levinson Rosenstein; Orrie Wilner, Rhoda Silver's brother-in-law

Maxine and Alan Stern, in memory of Jon Wahl's mother, Blanche Wahl; Harold Strauss; Shelah Bloom's mother, Shirley Bloom; Diane Meglin's father, Nick Meglin; Jeff Spinner Halev's step-father, Edward Rosenbaum; Sid Levinson's sister, Andrea Levinson Rosenstein; Myrna Schwartz's husband, Joel Schwartz

Thank you to our donors!

Education and Youth Director's Discretionary Fund

David and Susan Kirsch, in honor of Isaac Janiak Stein's Bar Mitzvah

Arthur and Judith Marks, in memory of Stuart "Buzz" Marcus, beloved brother of Lee Marcus

Peter and Marilyn Ornstein, in memory of Peter's mother, Augusta Ornstein

Barbara Renner, in honor of Elisabeth Gerson

Elaine Perilstein Memorial Fund

Sheila and Donald Goldstein, in memory of Orrie Wilner, Rhoda Silver's brother-in-law

Eric Pas Jewish Camp Scholarship Fund

Shula Bernard, in memory of her father, Martin Landau

Laura Flicker, in memory of Harry Rosenthal

Stephanie and Larry Greenberg, in honor of the birth of Gabriel Tzvi Resnick, grandson of Jane Gabin and Richard Cramer

Carol and Jimmie Haynes, with congratulations to Alan and Mary Joan Mandel on their 50th wedding anniversary

Nancy Kalow, in honor of Michele Pas

Mary Joan and Alan Mandel, in honor of David and JoAnn Rubin's wedding anniversary

Adele Nikolsky, in memory of her brother, Boris Mikhalevsky and her mother, Maria Mikhalevsky

Michele Pas, in honor of Nancy Luberoff, with thanks for stepping up to the plate during her time at Beth El; Tobin Freid receiving the Volunteer of the Year award and for her amazing work; Lorri Gudeman receiving the Grinspoon Award for Excellence in Education

Eric Pas Jewish Camp Scholarship Fund, cont.

Michele Pas and Barry Poss, in honor of Noah Pickus's tremendous job well done during his presidency at Beth El; Jacki and Mike Resnick, in honor of receiving the Volunteer of the Year Award; the arrival of baby Jonathan, Steve and Shula Bernard's grandson

Michele Pas and Barry Poss, in memory of Lee Marcus's brother and Mindy Oshrain's father

Norma and Bob Gindes, for Shavuot Yizkor prayers

Barry Poss, in memory of his beloved mother, Lily Poss Segar

General Fund

Debbie Goldstein and Steve Prince, in honor of Randi Smith for the cake for Debbie's mother, Sheila Goldstein's, birthday; Diane Markoff's promotion to Professor

Stephen Jaffe and Mindy Oshrain, in honor of Toby and Rosalyn Carson-DeWitt

Stephen Jaffe and Mindy Oshrain, in memory of Stephen's father, Howard Jaffe and Sally Hicks's father, John Hicks

Musia Lakin, in memory of her beloved husband, Martin Lakin and her mother, Miriam Gingold

Michael Lakin, in memory of his beloved father, Martin Lakin

Debra Linn, in memory of her father, Jay Howard Linn

Lewis Margolis, in memory of his mother, Thelma Margolis

Lorraine Morley, in memory of her husband, Raymond Morley

Peter Morrison, in memory of his mother, Pearl Morrison

General Fund, cont.

Rabbi Eric Solomon, in memory of Joel Schwartz, and for the many years in which the Schwartzes generously offered their lakefront access for conversions

Gilbert Katz Scholarship Fund

Adele Nikolsky, in memory of her beloved brother, Boris Mikhalevsky

Kiddush Fund

Pat and Wallace Mandell

Library Fund

Joel Abramowitz, in memory of his beloved mother-in-law, Helen Rosenzweig

Sheldon Hayer

Nancy B. Strauss, in memory of her father-in-law, Dr. Bruno Strauss

Lifelong Learning Fund

Carole Fox

Jane Gabin

Pat and Frank Fischer, in honor of Gladys Siegel's birthday and Mary Joan and Alan Mandel's 50th wedding anniversary

Pat and Frank Fischer, in memory of Frank's mother, Irma Fischer; Shelah Bloom's mother, Shirley Bloom; Lenora Ucko; Joel Schwartz

Donna Goldstein, with thanks to and in appreciation of Nancy Strauss's generosity for hosting the 2018 Hebrew Siddur class

Donna Goldstein, in memory of her father, Gerard Goldstein

Sheldon Hayer

Beth Hopping, in appreciation of Donna Goldstein

Randi and Scott Smith

Laura Brody Weaver

Thank you to our donors!

Mitzvah Fund

Nathan and Rachel Bearman, in memory of Stuart Marcus, brother of Lee Marcus

Hope Hartman and Bob Wechsler, in memory of Herbert Solomon

Mary Joan and Alan Mandel, for children's lunches on May 16

Mindy Oshrain and Stephen Jaffe, in memory of Carl Oshrain, MD, father of Mindy Oshrain, grandfather of Anna and Elana

Jaffe and Tommy Harwood

Marty and Katie Price, in memory of Adele Abramowitz

Simon and Barbara Shane, for the Durham CROP Walk

Aviva Starr, to assist with food for C.C. Spaulding Elementary School on May 16

Bob Wechsler, in memory of his father, Joseph L. Wechsler

Orthodox Kehillah

Ben Abram

Lewis Bateman, in honor of the birth of Maia Cohen, daughter of Tali and Yoni Cohen; the birthdays of Baruch Zur and Joel Fleishman; Baruch Zur leading Shacharit and reading the weekly parsha; Joel Fleishman leading Musaf; Jonathan Breitzer chanting the Haftarah, and for leading Shachrit on April 28; Dr. Yoni Cohen for leading Shachrit on April 21, and for reading some of the Parsha that day and on April 28 when he also led Musaf; Professor Fred Behrends for reading some of the Parsha on April 21; Professor Joel Fleishman for leading Musaf on April 21 and chanting the Haftarah on April 21

Orthodox Kehillah, cont.

Lewis Bateman, in honor of Mr. Jacques Aron, brother-in-law of Philippe Chemla, for his aliyah on April 21; Dr. Charles Cohen, father of Yoni Cohen, for his aliyah on April 21; Mr. Jonathan Breitzer for Mr. Michael Senter, for reading some of the Parsha on April 28; Professor Malachi Hachohen, for reading some of the Parsha on April 28; Dr. Daniel Reichman, for reading some of the Parsha on April 28; Mr. Miguel Amador, for his conversion to our faith and his Aliyah; Ms. Beth Crenshaw, for her conversion to our faith

The Chinsky Family, in honor of Joel Fleishman

Tali and Yoni Cohen, in honor of the birth of their daughter, Maayan

George Fishman, in memory of his beloved father, Louis Fishman

George and Sue Fishman, in memory of George's mother, Gertrude Popovsky

Rabbi Jerry and Carole Fox, in memory of Lawrence Fox

Adam and Beth Goldstein, in memory of Nick Meglin

Lorri Gudeman, in memory of her sister, Joani Gudeman

Sheldon Hayer

Beth Hopping and Julia Katz, in appreciation of Rabbi Greyber

Alan and Mary Joan Mandel, in honor of David and JoAnn Rubin's wedding anniversary

Laura Meglin and Norman Veis, in memory of Nick Meglin

Orthodox Kehillah, cont.

The Meglin Family, in memory of their beloved father, grandfather, and partner, Nick Meglin

Larry and Janice Stolzenberg, in memory of Edmund Stolzenberg

Abby and Gary Zarkin, in memory of Nick Meglin

Prayer Book Fund

Lorraine Kristal, in memory of Adele Abramowitz

Rabbi's Discretionary Fund

Rachel Ariel, in memory of her beloved parents, Hannah and Dr. Joseph Libman

Morty and Susan Berkowitz, in memory of Morty's beloved parents, Matilda and George Berkowitz, and Susan's beloved father, Harry Deutsch

Corinne Bohling, in appreciation of Rabbi Greyber and Rabbi Fischer

Baron Cobert, in memory of his beloved father, Henry Cobert

Harvey and Sandy Cohen, in memory of Harvey's father, Joseph Cohen

Sandy Cohen, in memory of her mother, Sadie Levine Weber

Naomi Ornstein Davis and Ian Davis

Rabbi Jerry Fox

Norma and Bob Gindes

Mike Greenberg and Lexie White, in honor of their son Ezekiel James Greenberg's Giyur

Stephanie and Larry Greenberg, in honor of their grandson Zeke Greenberg's Giyur, and with thankfulness to Rabbi Greyber for his beautiful ceremony

Thank you to our donors!

Rabbi's Discretionary Fund, cont.

Lorri Gudeman, in memory of her aunt,
Joan Tetel-Hanks

Hope Hartman and Bob Wechsler, in honor
of Jacki and Mike Resnick being named
Beth El's "Couple of the Year"

Stuart Kaplan, in memory of his mother,
Esther Kaplan

Annette Kronmiller

Alan and Amy Levine

Sol and Sheila Levine, in honor of Alan and
Mary Joan Mandel's 50th wedding
anniversary

Sol and Sheila Levine, in memory of Sol's
father, Maurice "Mush" Levine

Diana Levy, in memory of her father,
Herbert Felix Sharp

Lisa Ruckdeschel, in memory of Nick Meglin

Rabbi's Discretionary Fund, cont.

Margie Satinsky, in memory of her mother,
Florence Satinsky

Bob and Terri Tyson, in honor of Mary Joan
and Alan Mandel's 50th wedding anniversary

Terri Tyson, in memory of her father,
Herman B. Kushner

Sam and Jeanette Fink Programming Fund

Yolanda Grant, in honor of Margie Satinsky
for Healing Yoga

Yvonne Grant, in honor of Margie Satinsky
for Healing Yoga

Betsy LaForge, in honor of Margie Satinsky
for Healing Yoga

Margie Satinsky, in memory of Sid
Levinson's sister, Andrea Gale Rosenstein

Talmud Torah Fund

Barbara and Simon Shane, in honor of
Rebecca Kowek's amazing achievement

*This list contains donations made to Beth El from March 22 to July 31. If your name is missing, please email info@betheldurham.org.



*Tobin Freid, Mike & Jacki Resnick
BE Annual Meeting, May 6, 2018*



*Noah Pickus & Rhoda Silver
BE Annual Meeting, May 6, 2018*

Beth El Schedule of Services

Friday evening services:

Services are held on Friday evenings only in conjunction with other programming or special occasions. See monthly calendars for dates and times.

Saturday morning services:

Orthodox Kehillah Services begin at 9:00 am in the Freedman Center

Main Sanctuary services begin at 9:30 am at Trinity Ave. Presbyterian Church

Both services conclude with a Kiddush luncheon.

Weekday minyanim in the Freedman Center:

Sunday mornings at 9:30 am (will resume on September 16)

Wednesday mornings at 8:00 am (**7:45 am on Rosh Chodesh**)

**Please let the office know if you need to say Kaddish, even if a minyan has already been scheduled.*

Mazel Tov on your upcoming B'nei Mitzvah!!

Noah Andrews

October 6, 2018

Daniel Springer

October 13, 2018

Rachel Kirsch

December 8, 2018

OFFICE HOURS:

Monday - Thursday: 9:30 am to 5:00 pm / Friday: 9:30 am to 1:00 pm

BETH EL WEBSITE: www.betheldurham.org

BETH EL PHONE NUMBER: 919-682-1238

**Please use our temporary address of 1008 Watts St. for all correspondence.*

***Stay up to date with upcoming Beth El events at
<http://www.betheldurham.org/calendar/>***



1008 Watts Street
Durham, NC 27701

Nonprofit Org.
U.S. Postage Paid
Durham, NC
Permit No. 819

Dated Material

Address Service Requested



Photo Credit: Anna Carson DeWitt