

Message from Rabbi Greyber:



An Annual Report from the Rabbi's Discretionary Fund

Of all the ways that our community gives **תְּדָקָה** (*tzedakah* / charity) to support Beth El and our local Jewish community, I am honored that so many of you choose to fulfill the mitzvah through a gift to the Rabbi's Discretionary Fund. People make gifts for a

variety of reasons – in appreciation for lifecycle ceremonies or meaningful services on the High Holidays or Shabbat, to support needy members of our community, or just as one of the many ways to help strengthen Jewish life.

For me, the Rabbi's Discretionary Fund is a sacred trust. While discretion is critical, so too is transparency so that our community can have confidence that we uphold the highest ethical standards. At my request, the fund is reviewed annually by an anonymous member of the congregation. That review just took place. Approximately 1/3 of the fund's total disbursements (\$31k) went to local charities, another third went to congregant needs, and the remaining third was spent primarily on other organizations (Jewish and non-local charities) and programming.

As a new secular year begins, I want to take a moment to let you know a few of the ways that your support helps us to be a source of compassion for the world around us, and as a place where we strengthen Jewish community for ourselves and future generations. Through your generosity, gifts from the Rabbi's Discretionary Fund have helped

- Care for people in our community – both inside and outside the synagogue – who are struggling to make ends meet in the wake of coronavirus and a struggling economy
- Provide hunger and poverty relief and crisis support in Durham and Chapel Hill through organizations such as Urban Ministries, PORCH Durham, the Durham Public School Foundation, DCIA, Housing for New Hope, Durham Rescue Mission, the Orange County Rape Crisis Center, Habit for Humanity Durham, and more
- Support Beth El's interfaith partnerships with The River Church and Trinity Avenue Presbyterian Church
- Strengthen a pluralistic approach to Judaism in Israel through gifts to Masorti Olami, Yemin Orde, Kids4Peace, the Conservative Yeshiva in Jerusalem and more
- Build a world of full equality for LGBTQ Jews through Keshet
- Make available low cost health equipment to Israel's needy through Yad Sarah
- Support our teen bar/bat mitzvah tutoring program, including making available funds to provide extra tutoring for bar/bat mitzvah students with special needs
- Provide support for ceremonies and study materials for conversion candidates so finances don't stand in the way of somebody joining the Jewish people
- Fund scholarships for Jewish summer camps and continuing engagement programs for kids and young adults
- Encourage community-wide Jewish cultural programming and community observances
- Support my ongoing rabbinic learning and special synagogue programming

(continued on page 2)

Inside this issue:

Executive Director's Message...3

A note from the President... 4

Staff and Committee Updates... 5-16

Member Spotlight...17

Thank You to our Donors... 18-23

(continued from page 1)

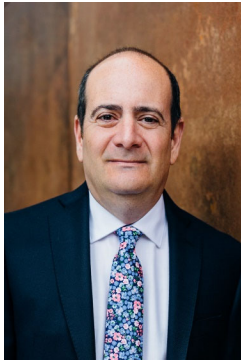
What I've listed is just a sampling of the kinds of things we've achieved together.

As 2020 comes to end ("don't let the door hit ya in the tush!") I want to say thank you again for the **צדקה** you give to our larger community, to Beth El, and to the Rabbi's Discretionary Fund. However we give, may we always remember that it is what we give away that remains with us forever, for through our generosity we create a better world. Rabbi Judah Bar Ilai taught, "Great is charity for it brings near the redemption" (Baba Batra 10a). **כֵּן יְהִי רָצוֹן**. Amen.

David [Signature]

Thank you for celebrating Chanukah with us!





*A Note from
Executive Director
Alan Friedman*

I miss our Beth El community at 1004 Watts Street.

I miss people’s smiles while schmoozing in the lobby. I miss seeing people praying in the sanctuary. I miss seeing people enjoying a Sandy-and-Jim-catered kiddush lunch in our social hall. I miss sitting around the conference table in the library with various committees building a stronger community. I miss the sounds of laughter in the halls of Talmud Torah. I miss Herman Sperling greeting us on Shabbat. I miss seeing Gladys with her Carolina Blue nails.

I miss a lot of things, and I know I’m not the only one.

I wrote back in September of 2019 that the completion of the building brought us back home together as a community. We were all so proud of the changes we went through together to build our beautiful new synagogue; creating a new physical sacred space was no small task. And then within a few short months, all of our lives were changed due to the Coronavirus.

Throughout the past nine months, our building has spent a lot of time empty. It is clear that what makes the space so special is not its physicality, but rather the people that fill it; our sacred space transcends the physical limitations of 1004 Watts Street. Beth El’s community extends much further out than our property.

But it wasn’t always easy. How many of us have had to have a Zoom crash course? Forgotten to mute yourself in the group chat? Had the kiddo, doggo, or whatever pop into the screen only to jump back out? Technicalities were learned and logistics needed to be sorted out so that we could even learn *how* to be together, especially in this new normal that has come from the pandemic.

One of the things that was (and is) always on my mind, as well as many others, was how do we allow congregants and families to have meaningful connections and experiences.

No clearer was this than our commitment to one another than the High Holidays. The earnest desire and need to make this connection through a computer screen was apparent because 900 of us could not come together in the sanctuary. We created, via Zoom, an intimate and personal space allowing Rabbi Greyber and Eric Meyers to be with us in our homes. It was warm, personal, and transformational. It was part of what we needed in 2020.

The idea of community is often nebulous and not distinct. However, in the face of this pandemic, there have been concrete displays of your caring, your kindness, your passion, your faith—and this is the definition of our Beth El community. You are Beth El. It is ironic that, while we cannot be physically together, distance continues to bring us closer through creative, thoughtful, and meaningful new traditions.

May 2021 unmask even deeper connections within our community.

Staff

Rabbi: Rabbi Daniel Greyber
 Rabbi Emeritus: Rabbi Steve Sager
 Executive Director: Alan Friedman
 Education & Youth Director:
 Alexandra Bicks
 Congregational Services Coordinator:
 Sheri Hoffman
 Communications & Marketing Associate:
 Rachel Greene
 Program & Membership Coordinator:
 Jenna Hyland
 Kitchen Manager: Sandy Fangmeier
 Head of Building Maintenance: Zachary Marshall
 B’nei Mitzvah Coordinator: Rachel Albert
 PreKadima Programming Coordinator:
 Laura Oestreicher Ricon
 Director of Teen Engagement: Zosia DeWitt

Board of Directors

President: Leslie Winner
 1st VP: Dan Schnitzer
 2nd VP: Kevin Ginsberg
 Treasurer: Syd Miller
 Recording Secretary: Richard Hart
 Immediate Past President: Debbie Goldstein

 Meg Anderson, Karen Burns, Norma Gindes,
 Valerie Glassman, Donna Goldstein, Susan
 Kirsch, David Klapper, Michael Kornbluth, Kim
 Bardy Langsam, Manny Spira, Jesse Summers,
 Tal Lewin Wittle

*From the Desk of Board President
Leslie Winner*



Friends,

When I agreed to become President of Beth El, I imagined it would be an opportunity for me to spend time with lots of you, building deeper relationships with those whom I already know, and getting to know more of you whose paths I don't usually cross. I envisioned working with you on projects, eating Kiddush lunch with you, and joining you and your families for celebrations and learning. I certainly did not imagine months of staying at home, mostly seeing you on Zoom, spiced up by the occasional one-on-one socially distanced and masked walk. I did not envision a year of COVID. How I miss seeing your faces in-person.

I imagine that all of you, in multiple ways, are feeling a sense of loss and stress. Some of you have sick relatives you can't go see; some have lost income; some are exhausted from working and supporting your children at home; some long for connection and community. And January is so dark outside.

Blessedly, we humans were created to have hope, to be resilient, and to live in community. My question is, how can we at Beth El help ourselves and each other feel connected and cared for, with an enhanced sense of meaning and peace, during this fraught time?

Rabbi Greyber, the staff, and the Beth El committees are busy planning and providing many opportunities to connect. For parents and children in the Talmud Torah, there are grade level projects and gatherings. For those who would like to study with Rabbi Greyber or Rabbi Sager, there are classes. For those who like to read and discuss books, sign up for the Jewish Book Festival in March. If you would like to make a difference in the community, sign up for the Social Action listserv by emailing Rachel Bearman at rsbearman@gmail.com, and you'll get notices of all the many ways to help. For those who would enjoy the peace of Shabbat Yoga, join in. **Open your weekly email on Wednesdays, and sign up for an event, a class, or project that suits your fancy!**

In addition, since we couldn't have our Beach Shabbaton in December, we are having a **Shabbaton at Home on the weekend of January 22-24**. There will be services and discussion groups, walks and craft projects, a cooking lesson, creativity hour, a poker game, and more. It's not too late to sign up; check your weekly emails for details. You don't even have to drive to the beach!

If these group activities are not what you need, perhaps you'd like a buddy—someone with whom to stay in touch by phone, or perhaps take a regular COVID-safe walk. **If you'd like a COVID-buddy, write me at president@betheldurham.org, and I'll pair you up.**

Finally, there are **lots of safe ways you can help the Beth El community**. So we are going to start having a "Help Wanted" link in our Wednesday email and on the BE webpage. You will be able to see the many ways you could pitch in—from preparing or delivering meals to stuffing envelopes, from providing Zoom facilitation to weeding the yard, we have lots of needs, and we have lots of talent in our congregation. Your help will keep us strong.

None of this will take the place of a hug or greeting or an in person smile, it won't let you be with your far away family, and it won't make COVID end sooner. But it could help you feel more connected, appreciated, and peaceful as you make your way through the months ahead.

Hold on to that hope, lean into your resilience, engage yourself in our community.



Talmud Torah

Shalom, Y'all!

As I write this in November, I am awed and grateful as I reflect on the past fall and the kickoff of our new Talmud Torah year. Thanks to our incredible, hardworking youth staff and faculty, we assembled and organized High Holiday Days of Awe-Some bags for each Talmud Torah student, containing hands-on activities like a Yom Kippur nature walk bingo, a make-your-own Sukkah kit, and ingredients to make an edible Torah scroll. I was heartened to receive so many photos and messages from families, showing how much how much they were enjoying their bags.

Our High Holidays this year were certainly all hands on deck, but they came together beautifully. Thanks to our family service leader Eliana Light, our storytellers Rabbi Greyber and Rachel Galanter, our Tot Shabbat leader Laura Oestreicher Ricon, and of course our talented teens, our education and youth department made a strong showing throughout. Our Beth El community came together in a remarkable way, one that seems to be a hallmark of our congregation's dedication and enthusiasm, and I will never forget how wonderfully they turned out.

Despite many reservations about how our Talmud Torah year would be on Zoom, I am continually amazed at the enthusiasm of our faculty and of our students to help make this unusual year vital and spirited. From our first-graders singing Hebrew songs together, to our sixth-graders diligently discussing complicated points of Torah, our students are still finding meaning, warmth, and excitement in our program. We gather together on Sundays for weekly Havdalah, and our Wednesday cohort joins together for a Mincha or Maariv service, led by Rabbi Greyber and our songleader Spencer Garfield. Everyone is happy to see each other and eager to sing! We have also managed to have a couple of outdoor socially distanced in-person events, including our seventh grade tefillin wrapping workshop, which is of course a treat. We plan these in conjunction with our COVID Task Force and our Va'ad HaChinuch (parents committee), as well as state and local regulations. Our hope is to have each class meet outside together at least once before the end of our year.

In addition, our brand-new electives, which are shorter, half-hour classes after the end of regular Sunday courses, have been a real treat and infused new energy and excitement into the proceedings! Our stalwart kitchen manager, Sandy Fangmeier, has been leading a cooking workshop for grades 1-3 (and their grownups!), which has gotten rave reviews and produced some yummy finished products. For our older students, community member Adam Levine is guiding some of our 4th-6th graders through some of the Talmud's more entertaining and outlandish tales. These are just a couple of examples of these electives, which will rotate each semester, and I am bowled over by how well we have pulled them off.

While none of this is what I would have pictured a year ago, or even six months ago, when contemplating what this program might look like, I am overall thrilled by how well it has gone. I hope we can continue going from strength to strength as we navigate the rest of this year together!

A handwritten signature in cursive script, which appears to read "Alexandra Bicks".

Alexandra Bicks
Education & Youth Director

Mazel Tov on your upcoming B'nei Mitzvah!!

Kai Spira
March 12-13, 2021

Joel Doriocourt
May 21-22, 2021



Teen Engagement

Hi Beth El Community!

My name is Zosia DeWitt, I am a proud longtime Bethelian and I'm now thrilled to be the Director of Teen Engagement. I am a sophomore at NC State University where I'm studying Psychology and Spanish. I've spent lots of time at Beth El growing up, whether that was being a Talmud Torah student myself, attending services, cooking in the kitchen, tutoring kids for Bar/Bat Mitzvahs, or having fun at events as a USYer. I am so excited to be in this position and have the chance to provide our amazing teens with the fun programming that I grew up with at Beth El.

This year has been off to a wonderful start. We've had fun game days on Zoom, talked about complex current events, had an outdoor movie night, attended conventions, and decorated donuts as we celebrated Chanukah together. I've also gotten the chance to see how beautifully our teens do at their Bar and Bat Mitzvahs!

Despite the challenges of 2020, our teens remain strong, motivated, and passionate. One thing I've noticed at every event is that our teens are all excited to stay connected to Beth El and one another. Our teens consistently show up not to just have fun, but to be positive mentors and role models for younger members of our community, whether that's through one-on-one tutoring, helping out with Talmud Torah, or planning events for Jewish teens around the state!

I am so excited to continue planning events with our teens. Although these times are difficult, we've come up with some pretty awesome ways to stay connected, and we can't wait to see what else is in store. As always, I'm here to field any questions you may have - please don't hesitate to reach out. I wish everyone a safe and happy 2021, and I look forward to the day when we can all be together again.

Sending warm wishes,

Zosia DeWitt

Director of Teen Engagement



PreKadima



Shalom Beth El,

My name is Laura Oestreicher Ricon and I am thrilled to join the Beth El community as the new Programming Coordinator for PreKadima (grades K-5). Even during these uncertain times, I have felt so welcomed and I'm excited to bring engaging and fun programming to the kids of Beth El!

I have been involved in Jewish education for most of my life, starting as a Madricha in eighth grade, then becoming president of my youth group in high school, to working as both a synagogue preschool teacher and religious school teacher. Additionally, I worked with PJ Library as a Program Coordinator for their tot program in Connecticut before moving to Chapel Hill last year. Programming for children and families has long been my passion, and I'm really excited to join a community with

such wonderfully involved families!

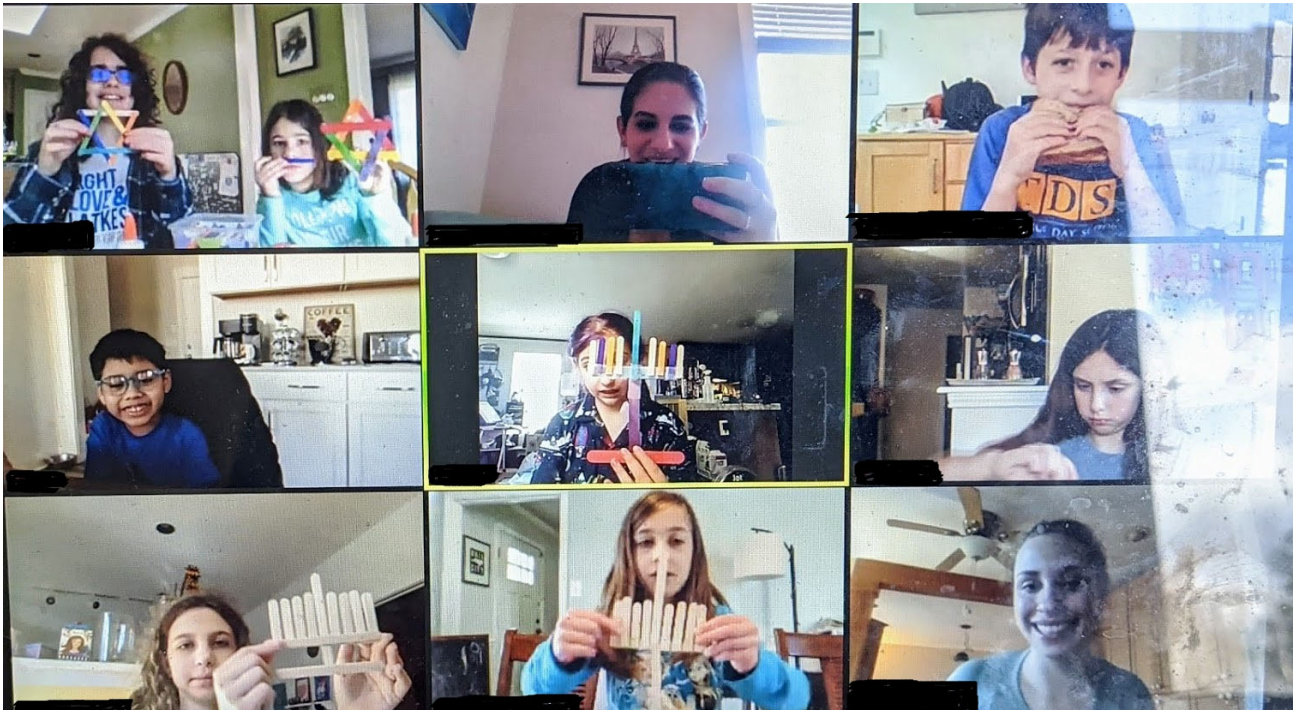
While children's programming has looked very different this year, it hasn't stopped us from having fun! In October and November, PreKadima hosted Zoom game events where we danced like no one was watching, did silly scavenger hunts, and played virtual versions of Bingo, Charades, and Pictionary.

I have been so impressed with the kids' enthusiasm, which is apparent even over Zoom! They are eager to reconnect with old friends, meet new ones, help each other with technological difficulties, and fully participate in the events.

I am looking forward to offering more varied programming as the year continues to progress virtually and I'm excited for the day when we can gather in person!

Please feel free to reach out to me with any questions or concerns.

Laura Oestreicher Ricon
PreKadima Programming Coordinator



Gratitude Beyond Measure From Rabbi Emeritus Steve Sager



In this season and in these times, we so need to take heart in the world's capacity for abundance! We might join our celebration of overflow to the exclamation of the Mishnah, an ancient rabbinic voice that happily praises certain things that have no fixed measure:

These things have no fixed measure: the corner of the field, the first fruit offering, the pilgrim's offering, acts of generosity, and Torah study.

Rooted in the life of an agricultural community, the Mishnah extols life grounded in the soil—in field and fruit, and in the soul—through the pilgrim's offerings, generosity, and learning. At its best, the world could be characterized by *beracha*—blessing—which is the breaking of bounds for the good.

But all things without measure begin with a measured step. The Mishnah, like the crops it describes, is rooted. After all, if there is no yield to the ways of careful planting, there will be no yield of sustaining and overflowing crops. Abundance begins with measure:

The corner of the field measure should not be less than one-sixtieth. For even though the early sages said that the corner had no measure, everything is according to the size of the field, the number of the poor, and the amount of the yield.

The Mishnah's abundance begins with the soil. We might say that the poet, Rivka Miriam, begins with the soul:

*These are things for which there is no fixed measure:
the laughter, the blue, and the moment.*

But more than abundance unending, Rivka recognizes moments of beginning. It is not abundance that she most cherishes. Rather, she celebrates the discrete acts—known and unknown—that are the beginnings of overflow:

*But it is from anguish that blue comes to me
and from the bell comes the laughter.
And the moment comes on its own.*

She forcefully wards off a content and complacent feeling of entitlement to the world's overflow:

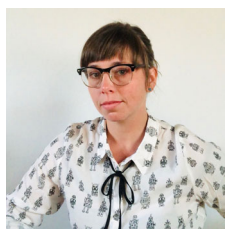
*Don't come near me! I whispered, warning,
I **want** to be constrained,
contracted as a shout and as final as an ending.
I don't want to be without measure.
I persist in my stance.
I deploy my voice before me, like a bulwark
while laughter, blue, and moment extend within me
They prod me
without measure.*

(continued on page 9)

(continued from page 8)

That which the poet adds to the Mishnah gives voice to our family's personal joy and thankfulness. Sabina and I are recipients of the sustaining acts of our giving community rooted in the soil and soul of measured deeds. Meals, visits, letters, contributions, prayers, and more continue to come our way. Each act of kindness and concern prods us without measure, reminding us of the abundance that, in the end, is beyond measure.

An addendum: Rivka Miriam agrees with my teacher, Rabbi David Hartman, of blessed memory, who taught me to "go forth and do small things." Modest exercise, short walks, regular hydration, time for prayer, rest, study, and sleep conspire to produce abundant wellbeing and energy that is manifest in teaching moments that are so dear to me. When all of us who "do small things" are together, there is a holiness beyond its parts.



We've all had to get creative in the ways we connect with each other. To grossly understate: it has been a challenge for me in both my personal and professional life. In the past year, my small house has added elementary school, playground, gym, office and fortress to its usual duties. I've rearranged a lot of furniture and carved out physical spaces where I previously thought none existed. As the Beth El Program and Membership Coordinator, I've been similarly stumped. I have wondered, alongside many of you, how the shul can accommodate everything we are called to do within the confines of cyber space. We are all working to create spaces where we previously thought none existed.

I'm impressed by how well so many gatherings, services and programs have translated to video conferencing. Technology is the most accessible it has ever been, and I am grateful beyond words. I am floored by how adaptable our congregation has proved to be. After the High Holidays, I sent a survey to hear about your experiences. A few respondents preferred this year to being in-person, citing things like convenience, comfort and good seats. Of course, the vast majority of you can't wait to return to the building. The consistent theme in your responses was – to paraphrase grossly – "we got handed all these lemons, but at least the lemonade is refreshing."

As helpful as it has been, I admit, I get Zoomed-out. There are days when I don't want to be camera-ready, even if it is only from the waist-up. After an entire day of working on a computer, the last thing I want to do is log back on. That is why I created the Bethelians podcast. It began as a thinly-veiled excuse for me to talk one-on-one to you, our amazing community members. Every other week, I interview someone from the community who is doing something I find interesting and we talk about their Beth El story. It is also a place you will hear highlights from the program calendar and updates from Rabbi Greyber.

I appreciate all of you who have listened so far and all who will. I have no real experience launching or producing a podcast, so this has been the product of a lot of trial, error, blood, sweat and tears (so many tears this year). Keeping that in mind, I welcome feedback, comments and suggestions. If you want to be a guest, come on! Send me an email with a little background on you, your Beth El story and something you're currently doing that would be fun for us all to hear about.

You can find the show anywhere you get your podcasts: Apple, Google, Stitcher, Spotify, etc. Just search the name Bethelians. You can also listen from a web browser at <https://betheldurham.libsyn.com/>.

Jenna Hyland

Program and Membership Coordinator



A Legacy gift is a Plan for the Future

By Norma and Bob Gindes



Norma and Bob Gindes are very grateful that they live in Durham near their grandchildren. (L to R) Levi, Bella, Nate, Simon and Nina Gindes.

Personal stories are the way we share our values and relate to one another. Promoting Life & Legacy gifts in our Beth El community is about telling the stories of why donors have decided to leave a legacy gift to our synagogue. As chair of the Grinspoon Life & Legacy initiative at Beth El, I thought it was time I shared my story. Maybe it will encourage other synagogue members to consider making plans for a legacy gift, too.

Family means everything to Bob and me. We grew up in the New York/New Jersey area with multiple siblings and extended family and were fortunate to share holidays and simchas with lots of relatives living within a 40 mile radius. We raised our family in Teaneck, NJ, and benefited from a large but cohesive Jewish community. The center of our Jewish life was our synagogue, but we were involved in national Jewish organizations, too. Supporting the Jewish community through volunteer service and tzedakah are values that were passed down from our parents and became intrinsic to our lives.

When we made the decision to move to Durham in 2012 to escape the snow and ice and live closer to our grandchildren, we had trepidation about moving south and leaving the Jewish community that was such an important part of our lives. To ease into this transition, our strategy was to buy a house in Durham, spend some holidays and vacation time visiting our kids and learn more about the Jewish community and the general area.

During our sojourns in Durham, we went to services at Beth El and were welcomed by some very special folks even though we were not permanent residents. It was a result of our early encounters at Beth El and also meeting Rabbi Sager and Sabina (who married our younger son on the beach at Topsail) that we began to find our place in Durham's Jewish community. By 2014, we made a permanent move and were lucky to have our younger son and his family join us by the end of the same year.

(continued on page 11)

(continued from page 10)



Beth El Synagogue is a warm and welcoming community and we easily found our new Jewish home here, making new friends and becoming involved in community activities. It is due in large part to the community we found at Beth El that helped us make a successful transition to our new home. When we learned about the Life & Legacy initiative, we knew that leaving a legacy gift to Beth El would make an important statement about the significance of the synagogue in our lives and ensure that a strong and vibrant Jewish community exists for future generations to come. We strongly believe that legacy giving is the most significant way our congregation can grow our endowment to support ongoing services and activities today and guarantee a vibrant Jewish community in the future.

We are grateful to Norma and Bob Gindes for making a legacy gift to Beth El through the Harold Grinspoon Life & Legacy initiative. They join over 56 BE member families who have also made a decision to secure the future of Beth El through a legacy gift. For more information about this program, please contact Norma Gindes at normagindes@gmail.com.

A Gift You Plan Now and Make Later

Many of us have been moved by the urgent community needs that have come about due to the COVID-19 pandemic. Beth El members have stepped up to meet these broader community needs while also diligently providing the membership dues and additional Annual Fund support that makes our synagogue's outstanding services and programs possible. As we make these investments in our congregation's present, we must also consider how we can plan for an enduring future for Beth El.

Gifts to the Beth El endowment are critical to ensuring the long-term sustainability of our congregation. Still, you may wonder how you can give away assets now if you don't know whether you or your family will need them later. A legacy gift – such as naming Beth El in your will or as beneficiary of a retirement plan account, life insurance policy, or bank account – allow you to make plans for supporting the future of our synagogue while allowing you the flexibility to amend those plans as needs arise.

Ease and Flexibility of a Legacy Gift

- Just one sentence in your will or trust, or completing a beneficiary form for your retirement plan or insurance policy is all that is needed to formalize your legacy gift intentions.
- Until your will or beneficiary plan goes into effect, you are free to alter your plans at any time.
- You can give a specific amount, a gift contingent upon certain events, or a percentage of your estate.

All legacy gifts, regardless of size, make a meaningful difference.

For more information about Beth El's Life & Legacy initiative, please contact Norma Gindes at normagindes@gmail.com.

Thank you to our Life and Legacy donors!

Beth El Synagogue recognizes and thanks those members who have committed to sustain our Jewish community with a gift in their wills, trusts, retirement accounts, or life insurance policies. We are grateful for their support during the past three years of our Life & Legacy initiative. Also, we acknowledge those members who had the foresight to generously support the creation of the Gladys and Earl Siegel Endowment and initiate the legacy campaign 17 years ago.

Anonymous (4)	Sue and David Klapper
Trudi Abel and Noah Pickus	Diana and Stanley Kovler
Joel Abramowitz	Susan and Harold Kudler
Alice Ammerman and Tom Keyserling	Harriet and Michael Lakin
Leah Austin	Susan and Joel Leeb
Rachel and Nathan Bearman	Sheila and Sol Levine
Mary J. Berman*	Anita and Arie Lewin
Shula and Steve Bernard	Elaine and Lee Marcus
Phyllis and Leon Dworsky*	Judith and Arthur Marks
Eli Evans	Krishna and Sydney Miller
Robert Evans	Evelina Moulder
Joel Fleishman	Elizabeth and Michael Null
Ruth and Michael Frank*	Marilyn and Peter Ornstein
Linda Frankel and Lewis Margolis	Michele Pas
Jane Gabin and Richard Cramer	Jacki and Michael Resnick
Norma and Robert Gindes	Laura and Barak Richman
Valerie and Matthew Glassman	Marion Meyer-Robboy
Beth and Adam Goldstein	Barbra Roberman and Hal Sandick
Debbie Goldstein and Steve Prince	Deborah and Robert Rosenstein
Donna Goldstein	JoAnn and David Rubin
Sheila and Donald Goldstein	Ilana Saraf and James Tulsy
Galia Goodman	Marjorie Satinsky
Sadie Goodman*	Alexandra and Dan Schnitzer
Elise Goldwasser and Harlan Gradin	Pat* and Eugene Sherman
Jennifer and Rabbi Daniel Greyber	Eunice and Herbert* Shatzman
Hudi* and Sam Gross	Gladys and Earl* Siegel
Gail and Steve Grossman	Judith and Lewis Siegel
Laura and Robert Gutman	Rhoda Silver
Sharon Halperin	Ellen and Phil* Singer
Hope Hartman and Robert Wechsler	Susan and Matthew Springer
Carol and Jimmie Haynes	Maxine and Alan Stern
Albert Heyman*	Deborah and Jonathan Wahl
Susan and Robert Hill	Ivy and Vincent Wingate
Jill Kaplan	Leslie Winner
The Kirshner Family	Tal and Eric Wittle
	Abby and Gary Zarkin
	Sheva Zucker and Sandy Kessler

ז"ל - *Of blessed memory*

Names in bold indicate that their Life & Legacy gifts have been formalized.

Meet Your Committee Leadership

Art Committee: Sol Levine

Chevrá Kaddisha: David Klapper

Community of Caring: Karen Burns, Diane Sasson,
and Laura Flicker

Development: Norma Gindes

Finance: Syd Miller

First Fridays: Rikki SaNogueira

House: Michael Null

Interfaith Working Group: Manny Spira and Lisa Berley

Kol Koloteinu: Krisha Miller

Lifelong Learning: Jane Gabin

Life & Legacy: Norma Gindes

Member Engagement: Sophia Abram

Men of Beth El (MoB): Steve Prince and Eric Lipp

Orthodox Kehillah: Phillippe Chemla and Jesse Summers

Ritual: Jereme Albin

Sisterhood: Tal Lewin Wittle

Social Action: Rachel Bearman and Susan Kirsch

Va'ad HaChinuch: Michael Kornbluth



Social Action

Thank you. During a very difficult year, Beth El members continued their support of our community, donating over \$8,000 to our annual food drive in support of Walltown Neighborhood Food Bank, Jewish Family Services, Iglesia Hispana Emanuel food pantry, Interfaith Council for Social Services of Chapel Hill, and One Soil Farm. *A special thank you to Bob Weschler for leading this campaign.* As food insecurity continues to rise, Social Action will continue to support local efforts to combat hunger. This coming Christmas, Beth El will be providing meals for Urban Ministries. Funding of the meals will come from Beth El's Social Action Fund. Donations to the fund enable the committee to respond to requests for support from local non-profits. Over the years we have supported hunger efforts, refugee resettlement, transitional housing programs, criminal justice efforts, school supply drives and more. Highest priority is given to local efforts that have a direct impact.

As the school year continues to be remote, we want to highlight the efforts of the Durham Public School Foundation and the Public School Foundation for Chapel Hill and Carrboro Schools to bridge the digital divide and ensure all students have access to education. To learn more, go to www.bullcityschools.org/digitalequity and www.publicschoolfoundation.org/.

Since July, a group of Beth El members have been meeting as part of a racial justice dialogue group. The group was initially created to discuss how the Beth El community could wrestle with, and engage in, the work of racial justice in our community. In September, the group expanded to include additional Beth El members who were interested in engaging in facilitated discussion around Ibram X. Kendi's, *How to be an Anti-racist*. As a group we developed ground rules for discussion and rotate facilitation each meeting. Our goal was to engage in the work as individuals and as part of our Beth El community while also reflecting upon our process to help develop a framework that could be used for larger Beth El discussions or programs around racial justice. United Synagogue for Conservative Judaism recently held a three-day virtual conference on racial justice that offered insight into how a synagogue community can be truly welcoming and open to Jews of color, and how synagogues and traditional African American churches and non-profits can create meaningful partnerships to help educate each other, break down barriers, and work together. While quieter and more limited during COVID, Beth El's relationship with The River Church continues to grow and develop.

The Social Action Committee will be meeting soon to plan for 2021. Our goal is to continue to offer opportunities for engagement through community-wide drives and through sharing of information and activities for individuals and families through our Social Action list-serve. If you would like to join the Social Action Committee or keep up to date with activities and opportunities through the list-serve, please email Rachel at rbearman@mebtel.net.

Community of Caring

BE a Phone Pal

We know that folks in our community are facing many hardships during this time. Being separated from family, experiencing the loss of loved ones, and changing health status can contribute to feelings of isolation and loneliness.

The **Community of Caring** has been helping us to stay connected to each other through our "Call-unteer" program. Volunteers provide companionship and contact to older adults through regular phone calls. We try to match pairs by common interests, shared acquaintances, or personality. These relationships have benefits for both the caller and the recipient:

- Create meaningful connections with others
- Offer peace of mind, knowing someone is checking in
- Combat the negative effects of social isolation

There are no special requirements to join this program, other than a willingness to be a reliable and friendly participant. If you would like to be added to our list of callers or recipients, just send a note to Caring@betheldurham.org or call the office at 919-682-1238.



Ritual Committee

The next time you open *Siddur Lev Shalem* at Beth El you will see a sticker on the inside back cover with an alternative communal prayer that we will be incorporating into our Shabbat morning services. **“A Prayer for Our Congregation, Community, and Country”** is the result of many months of work by the Beth El Ritual Committee during which we explored existing prayers in our siddur as well as other sources, and was formally adopted on February 11, 2020. We have traditionally said three communal prayers (a prayer for our country, a prayer for Israel, and a prayer for peace) and we will continue to do so at B’nei Mitzvah and on High Holidays. On other Shabbat mornings, we will recite this prayer and the prayer for the State of Israel in *Siddur Lev Shalem*. This prayer was created out of a desire to include a prayer for the Beth El congregation, as well as the wider community of our country. The new prayer retains some wording from the *Siddur Sim Shalom* prayer for our country that we said for so many years, but also reflects the importance of Shabbat, community, and tzedakah, and honors those in our society who work to protect us, regardless of personal risk -- especially during this pandemic period we are ever more aware of these special people who serve in so many capacities to keep us safe. I want to extend my thanks to the members of the Ritual Committee for their thoughtful work and conversations, and for their continued dedication to Beth El's ritual life.

Randi Smith, former Ritual Committee Chair

A Prayer for Our Congregation, Community, and Country

Ribbono Shel Olam, bless this congregation, those who lead and serve it, and those who contribute to its strength. Grant us the gift of Shabbat — a day to rest, a day to study Your Torah, a day to reach out to You in prayer, a day to feel the joy of community and to remember the importance of giving tzedakah. Help us to be Your faithful partners, preserving this world for future generations.

Our God and God of our ancestors, we ask Your blessings for our country — for its government, for its leaders and advisors, and for all who exercise just and rightful authority. Bless the inhabitants of our country with Your spirit. Watch over all those entrusted with our safety as they daily put their lives at risk to protect us and our freedoms. Be with them in times of danger; give them courage to act with honor and dignity, as well as insight to do what is right in Your eyes. May citizens of all races and creeds forge a common bond in true harmony, to banish hatred and bigotry, and to safeguard the ideals and free institutions that are the pride and glory of our country. And let us say: Amen.

Lifelong Learning

Join us for our upcoming virtual events!
Check our weekly announcement emails and the Beth El calendar for details
and links to join, and watch for new events to be added.

BETH EL LIFELONG LEARNING & JEWISH LIFE FOR GOOD
PRESENT



THE BETH EL BOOK FESTIVAL

MARCH 14-21, 2021



Schedule of Events

March 14, 2021:

- 1:00 pm Myla Goldberg
Feast Your Eyes
- 4:00 pm Elayne Klasson
Love is a Rebellious Bird
- 7:00 pm Max Gross
The Lost Shtetl

March 15, 2021:

- 1:00 pm Rachel Levin
Eat Something!
- 4:00 pm Anna Solomon
The Book of V.
- 7:00 pm Jane Schulman
Where Blue Is Blue

March 16, 2021:

- 1:00 pm Tommy Schnurmacher
Makeup Tips from Auschwitz
- 4:00 pm Kathy Kacer
The Brushmaker's Daughter
- 7:00 pm R. Joshua Hammerman
Embracing Auschwitz

March 17, 2021:

- 1:00 pm Eva Moreimi
Hidden Recipes
- 4:00 pm Esther Safran Foer
I Want You to Know We're Still Here
- 7:00 pm Sue Eisenfeld
Wandering Dixie

March 18, 2021:

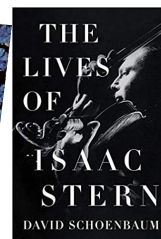
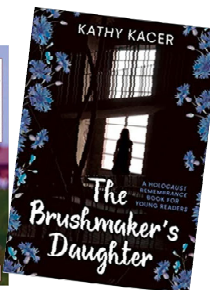
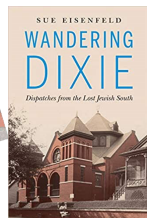
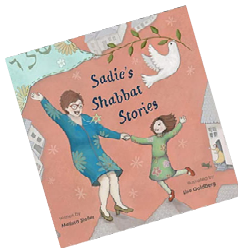
- 1:00 pm David Schoenbaum
The Lives of Isaac Stern
- 4:00 pm LaNitra M. Berger
*Irma Stern and the Racial Paradox
of South African Modern Art:
Audacities of Color*
- 7:00 pm Arthur J. Magida
Code Name Madeleine

March 19, 2021:

- 1:00 pm Melissa Stoller
Sadie's Shabbat Stories

March 21, 2021:

- 2:00 pm Panel Discussion,
The Bible With and Without Jesus



SHABBATON FROM HOME

January 22-23, 2021

Ode to the Shabbaton

Ev'ry mid December Beth El'ians retreat
The Beach - Trinity Center, off the path'n beat
For a **Shabbaton weekend full of eat, pray, schmooze**
(Maybe late night bonding with a bissel of booze)

It **fills up fast**, all available rooms do sell
What makes it so great? Let's count the ways, OK? Well...
It's a blast, it's a party, it's Jewy, it's swell
Makes the "Top 10 List of **What Makes Beth El Beth El**"

Services and study groups, **friends, lifelong and new**
Free time for hiking, yoga, book club (swimming too?)
Beit midrash, card games, song games, Oneg to devour
Our world class talent show – "Creativity Hour"

Most of all we enjoy each other's company
All ages young and old, the Beth El family
Multi-generation joys of community
A full Shabbat of rest unplugged – less do, **more BE**

But alas, times have changed, you have heard all the fuss
'Bout that deadly, fast spreading coronavirus
No Jews went to Trinity by car or by bus
(It's closed - that would have been weird, a sus "Among Us")

But guess what? We huddled up, took a little vote
To Shabbaton regardless, just do it remote
Jan. Two-Two weekend – clear your schedule and make room
Our first (and only ever) **Shabbaton on Zoom!**

It won't fill up – anyone who wants can attend
The price is far less than you would normally spend
Register now – attend it all or a la carte
We'll have a blast **being together while apart**

Services and study groups, **friends, lifelong and new**
Free time for hiking, yoga, book club (swimming too?)
Beit midrash, card games, song games (Oneg to devour?!)
Our world class talent show – "Creativity Hour"

Most of all we'll enjoy each other's company
All ages young and old, the Beth El family
Multi-generation joys of community
A full Shabbat of rest unplugged – less do, **more BE**

All are welcome!

Please join us!
Check your emails
for our Shabbaton
from Home
schedule,
registration
information, and
more!

Member Spotlight

Meet Danielle Morse!



Why Beth El?

I guess I'd say it all started up on a plot of land in northwest Connecticut at the Isabella Freedman Jewish Retreat Center. For a year and a half I lived in the pluralistic Jewish community there spending some time working on the farm, supporting operations in the office, and living out in the woods.

And really the friends and community I made up there are what brought me to Durham. I had heard a ton of positive things from Rikki SaNogueria and knew of the seeds Meredith Cohen was planting, so a few visits later (having also been won over by the Eno river and Locopops), I was ready to pack up and move.

I originally grew up in Chicago but have always felt that a big city wasn't the right fit for me. I've moved a lot in the last 15 years and have gotten to live in a variety of Jewish communities: from rural Connecticut to urban Boston to dense Jerusalem. Each one had its pros and cons, but to quote Goldilocks, Durham and Beth El feel "just right." Big enough where you're not scraping by just to make a minyan but small enough that you can actually get to know the community.

Covid-19 has affected everyone in some way and for me one of the ways was that, long story short, I ended up moving to Durham near the beginning of the pandemic. Despite this unprecedented time of distancing, I have felt so warmly welcomed to the Beth El community with phone calls, surprise Shabbat packages, and the few in-person distanced events.

During the days I work as a Salesforce Developer with non-profits around the country and so spend a good deal of my time indoors on a computer. In balance to that I love being active outdoors – I have a goal of running and biking in all 50 states and I'm almost 75% of the way there.

Thank you to our donors!

Annual Fund with Tributes

Julia and Carl Fox, in honor of Caryn Hertz and Larry Marks

Donna Goldstein, in memory of Patricia Freedman, sister of Nathalie Goodrich

Jeffrey and Lynn Lang, in memory of their beloved friend, opera lover Marge Mazer

Isaac and Rose Levy, in memory of Isaac's parents, Susana and Alberto Levy

Sharon and Ed Lunk, in memory of Sharon's mother, Helen Rosenberg

Ellyn Phillips, in memory of Irene Hackel

Anna Ripley-Moffittin, in appreciation of Rabbi Greyber

Scott Schwartz, Tobin Freid, Fran Schwartz, Ben Schwartz, Aven and Siveya Schwartz, in appreciation of Alan Friedman and Rabbi Greyber for helping create a memorable virtual Bat Mitzvah for Aven

Maxine and Alan Stern, in memory of Bob Hill's brother, Larry Hill

Bertha Bergman Library Fund

Sheldon Hayer

Nancy Strauss, in memory of Hudi Gross, wife of Sam Gross, and favorite Hebrew School teacher of Rebecca Strauss, daughter of Albrecht and Nancy Strauss

Beth El Synagogue Playground Project

Risa Botvinick, in memory of Milton B. Dworsky; her parents, Milton and Doris G. Dworsky; and grandmother, Florence Feldman

Drew Langsam and Kim Bardy

Langsam, in memory of Sandy Berman's brother-in-law, Ed Doocy

Building Maintenance Fund

Sheila and Don Goldstein, in memory of Bob Hill's brother, Larry Hill

Capital Campaign

Lewis Bateman, in honor of Philippe and Nicole Chemla and family; George and Sue Fishman; Jesse Summer and Mara Buchbinder and family; Yoni and Tal Cohen and family; Joel Fleishman; Barak and Laura Richman and family; Nadav Dym and family; Elhanan Tzipilevich and family; Marc Brettler; Fred Behrends; Noam and Susan Gordon and family; Joel Blass and Emma Gordon-Blass and family; Michael Senter and Elizabeth Crenshaw and family; Sheldon Hayer; Baruch and Ayelet Zur and family; Edward Balleisin and Karin Shapiro and family; Sheri Hoffman; Sandy and Jim Fangmeier and family; Rabbi Daniel and Jennifer Greyber and family; Rabbi Steve and Sabina Sager and family; Alan Friedman and family

Lewis Bateman, in memory of his parents, Benjamin Bateman and Caryl Cohn Bateman

Cemetery Fund

Jane Gabin and Richard Cramer, in memory of Jane's father, Alfred L. Gabin

Sheldon Hayer

Alexander Markman, in memory of his mother, Malvina Markman, and sister, Sarah Dinah Markman

Annette and Philip Skoletsky, in memory of Annette's father, Israel Park

Chevra Kaddisha

Family of Barrie Bergman, in his memory

Bob and Norma Gindes, in memory of Norma's mother, Shirley Schulman

Sylvia Leibel, in memory of her husband, Bernard Leibel, and brother, Lester Zander

Chevra Kaddisha, cont.

Sol and Sheila Levine, in memory of Annan Lipschitz, Sheila's grandmother

Sandy and Elliott Mills, in memory of Sandy's parents, Helen and Dan Portnoy

Scott Schwartz, Tobin Freid, Fran Schwartz, and Ben Schwartz, in memory of William "Bill" Schwartz and in appreciation for shiva minyan leaders

Marlene and Chuck Spritzer, in memory of Marlene's parents, Janet and Meyer Alpern

Community of Caring

Anonymous, in honor of Rabbi Jerry and Carole Fox

Risa Botvinick, in appreciation of those who helped to create and/or deliver the High Holiday Kits

Doris Iarovici, in memory of her father, Maurice Iarovici, and husband, Larry Katz

Ann and Kevin Leibel, in honor of Abby Zarkin and her leadership on the Beth El High Holiday Project

Francine Lerner, in memory of Malachi Hacohe's parents

Arthur and Judith Marks, in appreciation of the members of the High Holiday Kit Committee - Abby Zarkin, Sally Brown, Ann Leibel and Michelle Shrott, and of the many caring volunteer drivers, who performed this labor of love

Evelina Moulder, in honor of Rhoda Silver and Richard Cramer for their kind care of Lorraine Morley

Philip and Annette Skoletsky, in memory of their mothers, Mary Skoletsky and Bertha Park

David and Sharon Weber, in appreciation of High Holiday services

Thank you to our donors!

Community of Caring, cont.

High Holiday Kit Committee, in appreciation of all the volunteers and drivers for the High Holiday Kits

Earl and Gladys Siegel

Endowment Fund

Donald and Sheila Goldstein, in memory of Nathalie Goodrich's sister, Patricia Freedman

Sheldon Hayer, in memory of Lois Silver-Price's father, Arthur Silver; and Sally Hicks's mother, Molly Hicks

Carol and Jimmie Haynes, in honor of Ann and Jeff Derby's 50th wedding anniversary

Irwin and Deborah Kahn, in memory of Irwin's mother, Bernice Kahn

Arthur and Judith Marks, in appreciation of the Life & Legacy Committee's Sukkot goodies

Lucy Morrison, in memory of her father, Joseph Morrison

David and JoAnn Rubin, in memory of Miriam Slifkin, Lorraine Morley, and Neil Yeoman, father of Barry Yeoman

David and JoAnn Rubin, in celebration of the B'nei Mitzvah of Julian Goldberg, Isaiah Donaldson, Elle Cohen, Justin Spitzer, Joshua Null, and Ella Cohen

David and JoAnn Rubin, in celebration of Judy and Lew Siegel's 60th wedding anniversary; Anne and Jeff Derby's 50th wedding anniversary; the naming of Sutton Siegel, daughter of Avram and Michelle Siegel

Gladys Siegel, in memory of Miriam Slifkin; Billy Pizer's mother, JoAnn Pizer-Fox; Emma Gordon-Blass's mother, Loraine Gordon; Lesley Stracks-Mullem's father, Bob Stracks; Barrie Bergman; Donald Morse, grandfather of Danielle Morse; Neil Yeoman, father of Barry Yeoman; Lorraine Morley

Earl and Gladys Siegel

Endowment Fund, cont.

Gladys Siegel, in memory of Lois Silver-Price's father, Arthur Silver; Sally Hicks's mother, Molly Hicks

Education & Youth Director's Fund

Anonymous, in honor of Rachel Ariel, Peter Ornstein, and Eric Mlyn

Alice and Lewis Gold, in memory of their mothers, Bessie D. Satlof and Emily Gold

Peter and Marilyn Ornstein, in memory of Peter's father, Jacob A. Ornstein

Rasmussen Family, in memory of Irene Hackel

Herman and Roberta Sperling, in memory of Herman's mother, Lillian Sperling

Eric Pas Jewish Camp Scholarship Fund

Bob and Norma Gindes, in memory of Bob's sister, Donna Gindes

Nancy Strauss, in memory of Rebekah Resnick

General Fund

Anonymous, in memory of Harry and Helen Rosenberg

Ruth Greenberg, in memory of her husband, Bernard G. Greenberg, and mother, Anna Marck

Carol and Jimmie Haynes, in memory of Lois Silver-Price's father, Arthur Silver

Harriet Lakin, in memory of her father, John G. Ullman

Musia Lakin

Grace and Irwin Lebow, in memory of Irene Hackel

General Fund, cont.

Sharon and Ed Lunk, in memory of Sharon's mother, Helen Rosenberg

Alan and Mary Joan Mandel, with thanks for the High Holiday Kit

Ann and Vic Moore, in memory of Irene Hackel

Peter Morrison, in memory of his parents, Pearl and Joseph Morrison

Denise Richards, in memory of her father, Harold Brown

Katya Roytburd, in honor of the High Holidays, and Sheri Hoffman

Douglas Schiff and Karen Sindelar

Gilbert Katz Education Fund

Nancy Strauss, in memory of Emma and Karl Hirsch, great-grandparents of Bernie Fischer

High Holiday Food Drive

Joel Abramowitz

Harold Baranger and Meg Anderson

Sheldon Becker

Stephen and Shula Bernard

Risa and Ira Botvinick

Jonathan and Susan Breitzer

Richard Cramer and Jane Gabin

Koweek Family

Sue Gidwitz and Gail Freeman (שׂו"ל)

Bob and Norma Gindes

Donald and Sheila Goldstein

Pat and Jim Kronick, in appreciation of High Holiday services

Stephen and Virginia Lang, with gratitude and appreciation for the very meaningful virtual holiday services

Hunter and Jay Levinsohn

William and Cheryl McCartney

Thank you to our donors!

High Holiday Food Drive, cont.

Anita and Jeff Meddin

Eric and Carol Meyers

Katya Roytburd

Liel and Tamar Rozett Sapir

Jack and Diane Sasson

Roy Schonberg and Cheryl Marcus

Ellen Singer

Jesse Summers and Mara Buchbinder Summers

Leslie Winner and Gerald Postema, in appreciation of Abby Zarkin

High Holiday Fund

Moss and Robin Cohen

Martha Hauptman, in honor of the High Holiday Kit committee

Doris Iarovici, in appreciation of Rabbi Greyber, Rabbi Sager, and Eric Meyers

Sheri and Joel Mullin Katz, in appreciation of lending Rachel Katz mahzors

Stanley and Diana Kovler

Sylvia Leibel

Arthur and Judith Marks, in honor of Sarah Lerner and her beautiful artwork for the High Holiday Kits; High Holiday Kit committee and volunteers; in appreciation for High Holiday services

Samuel and Patricia Mirlis, with thanks for High Holiday services

Harriet Moulder

Robbie Schultz

Katie Schwartz

Jacki Sergent

Milton and Rhonda Silverman, for Yizkor Zoom services, courtesy of their daughter and son-in-law, Randi and Scott Smith

Bob Wechsler and Hope Hartman

Hudi Gross Education Grant

Sam Gross, in memory of his wife, Hudi Gross

Hudi Gross Education Grant, cont.

Roger Perilstein and Kathy Bartelmay Perilstein, in honor of Ann and Jeff Derby's 50th wedding anniversary

Kiddush Fund

Alan and Mary Joan Mandel, in memory of Alan's father, Sidney "Chick" Mandel

Landscaping Fund

Sheldon Hayer

Rhoda Silver, in memory of Arthur Axelbank's mother, Mickey Axelbank; Susan Breitzer's uncle, Richard Roth; Bob Hill's brother, Larry Hill; Nathalie Goodrich's sister, Patricia Freedman; Adam Levine's grandmother, Laura Lee Simon; Gene Lipman's sister, Gloria Lipman; Elliot Lowenthal's father, Joseph Lowenthal; Mary Joan Mandel's brother, Anson Chester Bossard; Scott Schwartz's father, William 'Bill' Schwartz; Miriam Slifkin; Matt Springer's father, Leonard 'Len' Springer; Murray Stollwerk's brother, David Stollwerk; Barry Yeoman's father, Neil Yeoman

Rhoda Silver, with thanks to Eric Cohen, and Steve and Avery Prince for their sukkah help; with thanks to Richard Cramer for all his help and good humor in their joint work; in honor of Sheva Zucker and Sandy Kessler for the mitzvah of attending Lorraine Morley's funeral

Lifelong Learning Fund

Bob and Norma Gindes, in memory of Bob's mother, Sunny Gindes

Donna Goldstein, in memory of Lois Silver-Price's father, Arthur Silver

Sheldon Hayer

Isaac Price, in memory of Neil Yeoman, father of Barry Yeoman; Sally Hicks's mother, Molly Hicks

Nancy Strauss, in memory of Sara Levine Goldstein, mother of Donna Goldstein

Memorial Book

Katherine White, in memory of Irene Hackel

Mitzvah Fund

Alice and Lewis Gold

Lynne Grossman, in memory of her father, Melvin Gladstein, aunt, Carrie Gladstein, mother-in-law, Anna Grossman, father-in-law, Julius Grossman, uncle, Erven Gladstein, grandparents, Louis and Lilly Gladstein, and uncle, Nathan Gladstein

Mitzvah Fund, cont.

Hope Hartman and Bob Wechsler, in memory of Bob Hill's brother, Larry Hill and Hope's father, Philbert Hartman

Hope Hartman, in memory of her husband, Michael Holub

Stephen and Mindy Oshrain Jaffe, in honor of the birth of their granddaughter, Caroline Oliver Ruderman, and her parents Anna Jaffe Ruderman and Brandon Ruderman

Mindy and Lori Oshrain, in appreciation of Beth Goldstein

Scott Schwartz, Tobin Freid, Fran Schwartz, Ben Schwartz, Aven and Siveya Schwartz, in memory of William "Bill" Schwartz

Orthodox Kehillah

Miguel Amador, for the High Holidays

Lewis Bateman, in memory of his parents, Benjamin Bateman and Caryl Cohn Bateman; Sidney and Malvina Markman, Sarah Dinah Markman, and Louisa Markman

Philippe and Nicole Chemla, in memory of Phyllis Dworsky

Michaela Davidai

Ingrid and Jeff Epstein, in memory of Phyllis Dworsky

George and Sue Fishman, for the High Holidays

George and Sue Fishman, in memory of George's sister, Rhea Fishman

Joel Fleishman, for the High Holidays

Jason Freed, for the High Holidays

Bob and Laura Gutman, in honor of Charlotte and Hillel Koren

Malachi Hacohen and Julie Mell Hacohen

Sheldon Hayer

Hillel and Charlotte Koren, for the High Holidays

Hillel and Charlotte Koren, in honor of the birth of Philippe and Nicole Chemla's granddaughter, Ilane Juliette

Dan and Tara Leeder

Harold Lindenthal, in honor of Joel Fleishman

David and Janet Silfen, for the High Holidays

Larry and Janice Stolzenberg, in appreciation for the High Holiday Kit

Elhanan Oren Tzipilevich

Prayer Book Fund

Bob and Norma Gindes, in memory of Bob's father, Jack Gindes

Rabbi's Discretionary Fund

Andree and Larry Kodack Allen, for a speedy recovery for Rabbi Sager

Arthur and Susi Lief Axelbank, with gratitude for Rabbi Greyber's ongoing spiritual leadership

Steven and Margaret Bachenheimer, in memory of Steven's father, Herman Bachenheimer

Stephen and Shula Bernard, in honor of all those who maintain the synagogue, and all those who provide leadership in the services

Risa Botvinick, in appreciation of Rabbi Steven and Sabina Sager

Marc Brettler

Karen Burns and Marshall Botvinik

Barton and Josiane Cobert, in memory of Barton's mother, Ruth Cobert

Jo and Marc Cohen, in honor of Rabbi Sager

Naama and Jon Crisp, in honor of Netta's naming, and in appreciation of Rabbi Greyber

Pat Fischer, in appreciation of Rabbi Steve Sager

Rabbi Jerry and Carole Fox

Mark and Debbie Friedman, in memory of Mark's mother, Ruth Friedman, and Debbie's parents, Lenore and Herman Siegel

Gabrieli Family, in honor of Jacob's Bar Mitzvah, with thanks to Rabbi Greyber and Spencer Garfield

Bob and Norma Gindes, in memory of Norma's father, Herman Schulman and Norma's mother, Shirley Schulman, and in gratitude to Rabbi Greyber for reciting El Male Rachamim

Kevin and Andrea Ginsberg, for a speedy recovery to Rabbi Steve Sager

Alice and Lewis Gold

Ron Goldberg, in memory of his wife, Marylu Goldberg

Lane Golden, in memory of her brother, Barrie Bergman

Sheryl and Leah Goldman, in appreciation of Rabbi Dan Greyber

Thank you to our donors!

Rabbi's Discretionary Fund, cont.

Donald and Sheila Goldstein, in honor of Rabbi Greyber and Eric Meyers leading of High Holidays services this year

Adam and Beth Goldstein, on the occasion of Larry Marks and Caryn Hertz's 60th birthdays

Sheila and Donald Goldstein, in honor of Liora Lovins' and Jonas Asher's B'nei Mitzvah; in memory of Lois Silver-Price's father, Arthur Silver

Donna Goldstein, in honor of Netta Crisp's naming

Beth Goldstein, in grateful appreciation for the care and support of Sally Brown, Ann Leibel, Diane and Barry Leshin, Abby Zarkin, Michelle Shrott, and Orit and Gaby Szulik during her recovery

Andrea Greyber, in memory of Lillian Cohen

Bob and Laura Gutman

Caryn Hertz and Larry Marks, in honor of Bryan Winters, Adam and Beth Goldstein, Kevin and Ann Leibel, and Matt and Susan Springer

Bob and Susan Hill, in memory of Bob's brother, Larry Hill

Richard Hirsh, in appreciation of Rabbi Greyber's Misheberach for Rabbi Sager on Yom Kippur

Sam and Marsha Horowitz, in memory of Phil Singer

Sharon Joffe and Amanda and Ashley Jowell, with thanks for the meaningful New Year services

Stuart and Ann Kaplan, in memory of their daughter, Lisa Heather Kaplan; Stuart's mother, Esther Kaplan and Stuart's father, Moshe ben Eliezer v'Hanna; and Ann's father, Stanley Barclay

Steven and Ellen Kaplan, in memory of Irene Hackel

Connie Hackel Katz, in memory of her mother, Irene Hackel, and with gratitude to Rabbi Greyber for his support

Larry Kodack and Andree Allen, in memory of Larry's father, Albert Kodack

Larry and Andree Allen Kodack, for a speedy recovery to Rabbi Steve Sager

Pat and Jim Kronick, in honor of Ella Cohen's Bat Mitzvah

Michael and Harriet Lakin, for the speedy recovery of Steve Sager

Joel and Susan Leeb

Rabbi's Discretionary Fund, cont.

Kevin and Ann Leibel, in honor of Caryn Hertz and Larry Marks's milestone birthday

Diane and Barry Leshin, in appreciation of Rabbi Greyber and High Holiday services

Diane and Barry Leshin, in memory of Diane's mother, Barbara Wiener Lechenger

Sol and Sheila Levine, with thanks to Rabbi Greyber, Eric Meyers, and all the Beth El staff and service participants for making the holidays as meaningful as possible!

Sol and Sheila Levine, for weekday siddurim for the B'nei Mitzvah class

Hunter and Jay Levinsohn, for a speedy recovery for Rabbi Sager; in memory of Hunter's mother, Agnes; in honor of the Beth El staff with love

Laura and Jack Livingston, in honor of Arthur Axelbank performing the Brit Milah for their son Paul

Sharon and Edward Lunk, in honor of Rabbi Sager

Alan and Mary Joan Mandel, for a speedy recovery for Rabbi Steve Sager

Alan and Mary Joan Mandel, for weekday siddurim for the B'nei Mitzvah class

Cheryl Marcus and Roy Schonberg, in appreciation of Rabbi Steve Sager and for weekday siddurim for the B'nei Mitzvah class

Alyne O'Keefe, in appreciation for High Holiday services

Michele Pas and Barry Poss, in honor of Rabbi Greyber, Rabbi Sager, Eric Meyer, Sid Levinson, Jonny Wahl, Alan Friedman, Jenna Hyland, and the Beth El staff for orchestrating the magnificent High Holiday services so beautifully and meaningfully during these extraordinary times, with many and thanks and much appreciation

Meg and Marty Pomerantz, for the speedy recovery of Steve Sager

Barry Poss, in memory of his brother, Allan Poss

Isaac Price, in memory of Lois Silver-Price's father, Arthur Silver

Michael and Evelyn Reed

Stanley and Marion Robboy

Thank you to our donors!

Rabbi's Discretionary Fund, cont.

Jacob Robins, for weekday siddurim for the B'nei Mitzvah class

Pilar Rocha-Goldberg and Ron Goldberg, in memory of Pilar's mother, Esperanza Remolina-Rocha

Howard and Claire Rockman, in memory of Howard's mother, Yetta Rockman

Robert and Debbie Rosenstein, for children's hunger relief

Robert and Debbie Rosenstein, for the speedy recovery of Rabbi Sager

Jack and Diane Sasson, in memory of Larry Hill, brother of Bob Hill

Margie Satinsky, in appreciation of Rabbi Greyber

Bernard and Sylvia Shane, and Arthur and Maude Mordant

Rhonda and Robert Silver, in memory of Louis and Sylvia Silver; Pat Silver and Sadie Goodman

Philip and Annette Skoletsy, in memory of Philip's sister, Sandra Richmond

Sue Slatkoff and Ron Strauss, in honor of Rabbi Steve Sager

David Sontag, in honor of Rabbi Sager

Susan and Matt Springer, in honor of Caryn Hertz and Larry Marks's Big Birthday; Rabbi Greyber and the entire BE staff for making the High Holidays so beautiful; High Holiday Kit Committee for making the beautiful High Holiday gift bags

Maxine and Alan Stern, for hunger relief

John Sternlicht, in honor of Diane Meglin and Bruce Korn

Murray Stollwerk, in memory of his mother, Ida Stollwerk

Larry and Janice Stolzenberg, in memory of Janice's mother, Anna Krepchon

Larry and Janice Stolzenberg, in appreciation for the High Holiday Kit

Nancy Strauss, in memory of Martin Fischer, Abraham Fischer, and Selma Fischer, grandfather and great-grandparents of Bernie Fischer

Raquel Strauss, in honor of Sylvia Leibel's 90th birthday

Laura Svetkey, for weekday siddurim for the B'nei Mitzvah class in honor of Gladys Siegel

Rabbi's Discretionary Fund, cont.

Janis and Jeffrey Tillman, in memory of Janis's father, Barrie Bergman

David Weaver and Laura Brody Weaver

Leslie Winner and Gerald Postema, for a speedy recovery for Rabbi Steve Sager

Bryan Winters, birthday tribute in honor of Drs. Larry Marks and Caryn Hertz

Rob Wynbrandt, in honor of Sandra Berman and Rabbi Greyber for High Holiday Services

Sam and Jeanette Fink Programming Fund

Francine Mehler, in honor and appreciation of Margie Satinsky and Healing Yoga

Sandra Lazarus Youth Activities Fund

Jon Bellman, in memory of Bernard B. Bellman

Alice and Lewis Gold

Sol and Sheila Levine, in honor of "Buddie" Berger celebrating her 100th birthday!





1004 Watts Street
Durham, NC 27701

Nonprofit Org.
U.S. Postage Paid
Chapel Hill, NC
Permit No. 77

Dated Material

Address Service Requested

*Stay up to date with upcoming Beth El events at
<http://www.betheldurham.org/calendar/>*

Beth El Schedule of Services

Friday evening services:

See monthly calendars for dates and times.

Saturday morning services:

Orthodox Kehillah services begin at 9:00 am

Main Sanctuary services begin at 10:00 am on Zoom or live on our website

Weekday minyanim on Zoom

Sunday mornings at 9:30 am

Wednesday mornings at 8:00 am (**7:45 am on Rosh Chodesh**)

** Check our calendar or weekly emails for links to join our virtual services and programming*

