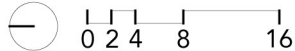
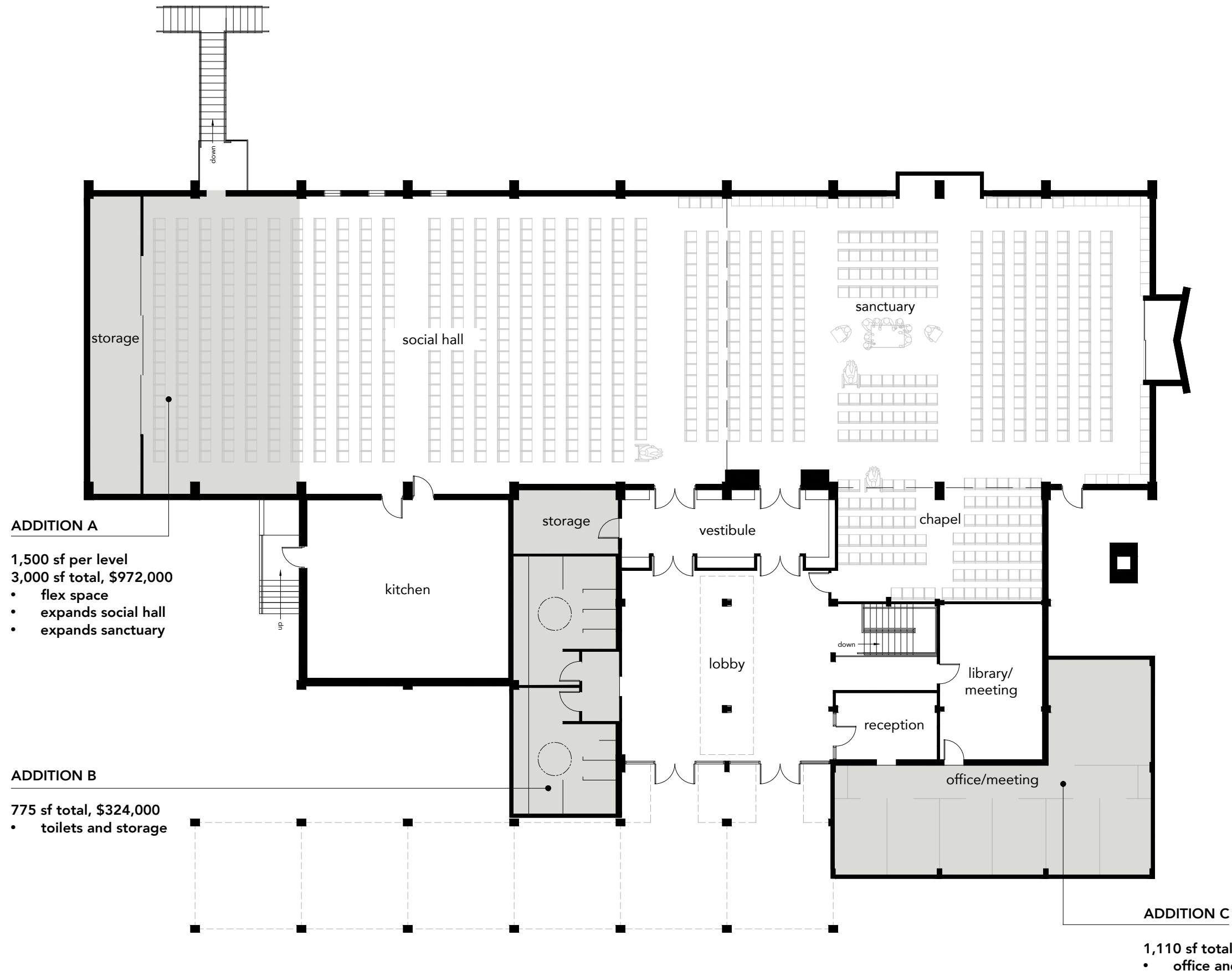


BETH EL SYNAGOGUE
Main Level



- | | | | |
|--------------|--------------|----------------|-------------------|
| 1. sanctuary | 4. office | 7. storage | 10. playground |
| 2. chapel | 5. lobby | 8. kitchen | 11. entry pergola |
| 3. library | 6. vestibule | 9. social hall | |

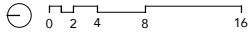
**"A SAFE,
SUSTAINABLE AND
INCLUSIVE COMMUNITY"**

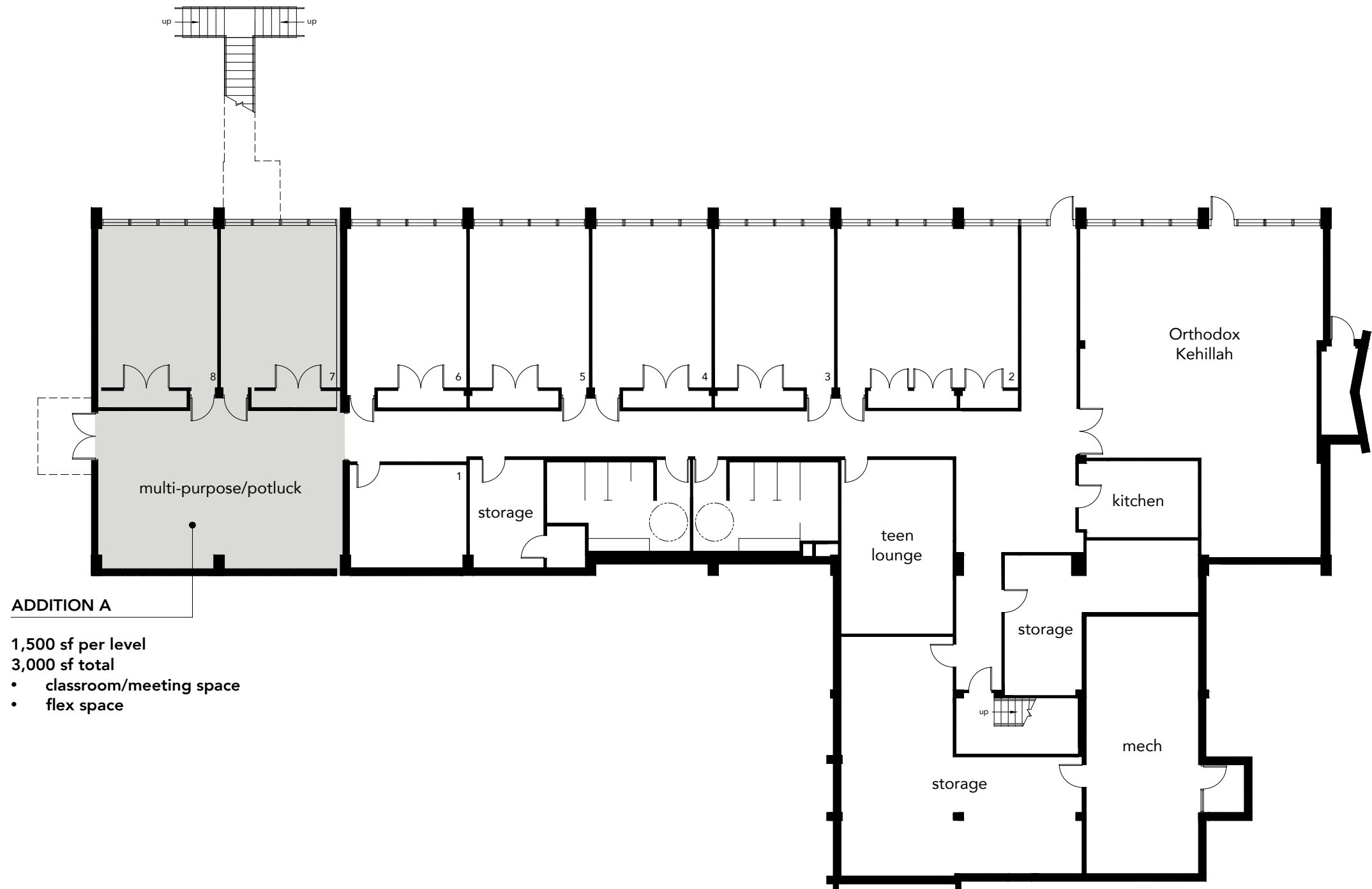


Proposed Plan – All Phases

- . Beth El community in one building
- . Enlarged lobby gathering space
- . New vestibule to sanctuary and social hall
- . Expanded seating
 - . Typical worship – 307
 - . Special worship – 381
 - . High Holidays – 924
- . Re-oriented sanctuary
- . Expanded social hall (57% increase)
- . New flexible meeting spaces
- . Additional offices
- . Rebuilt entrance pergola
- . New bathrooms (main and lower levels)
- . New classroom/meeting spaces (lower level)
- . Renovation to main building includes:
 - . Reconfigured stair
 - . New roof
 - . Updated HVAC systems
 - . New windows/doors
 - . Updated kitchen
 - . Audio/visual upgrade
 - . New sanctuary seating

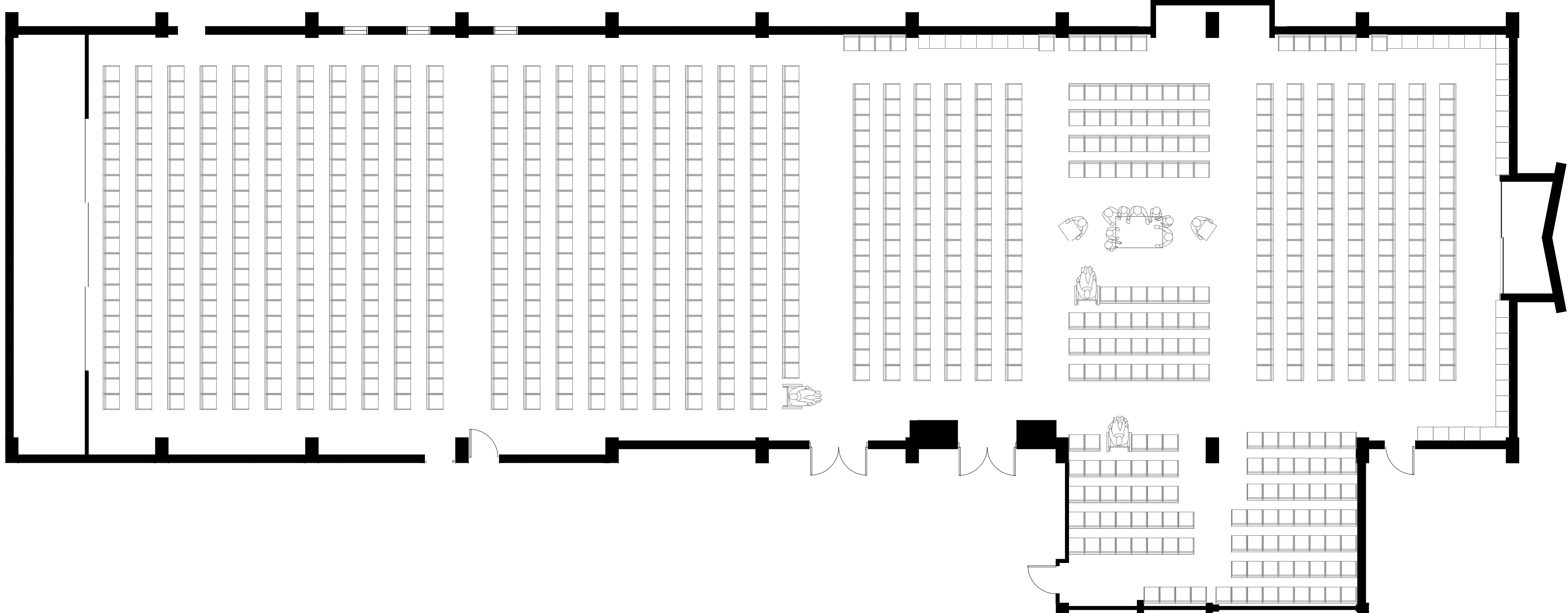
Probable Project Cost - \$4,100,000





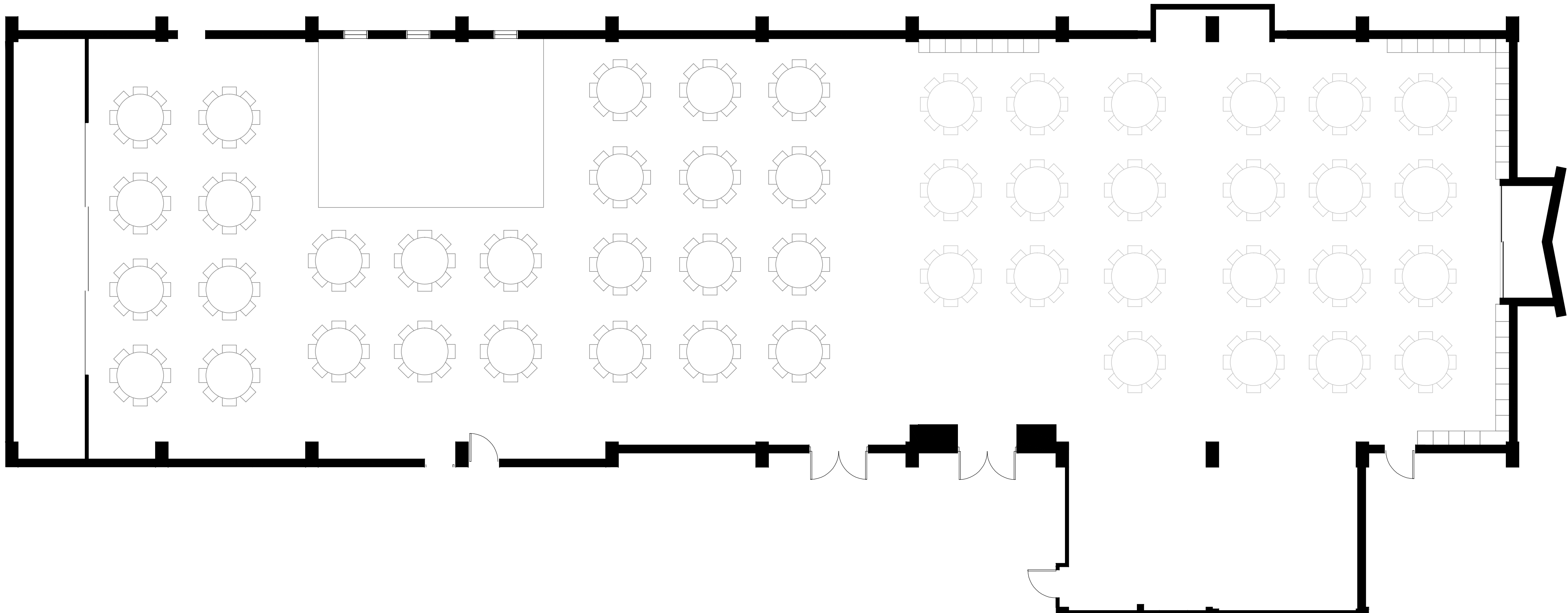
ADDITION A

- 1,500 sf per level
- 3,000 sf total
- classroom/meeting space
- flex space



Worship Seating

- High Holidays - 924



Event Seating

- Social Hall - 208-234
- Sanctuary - 176-198